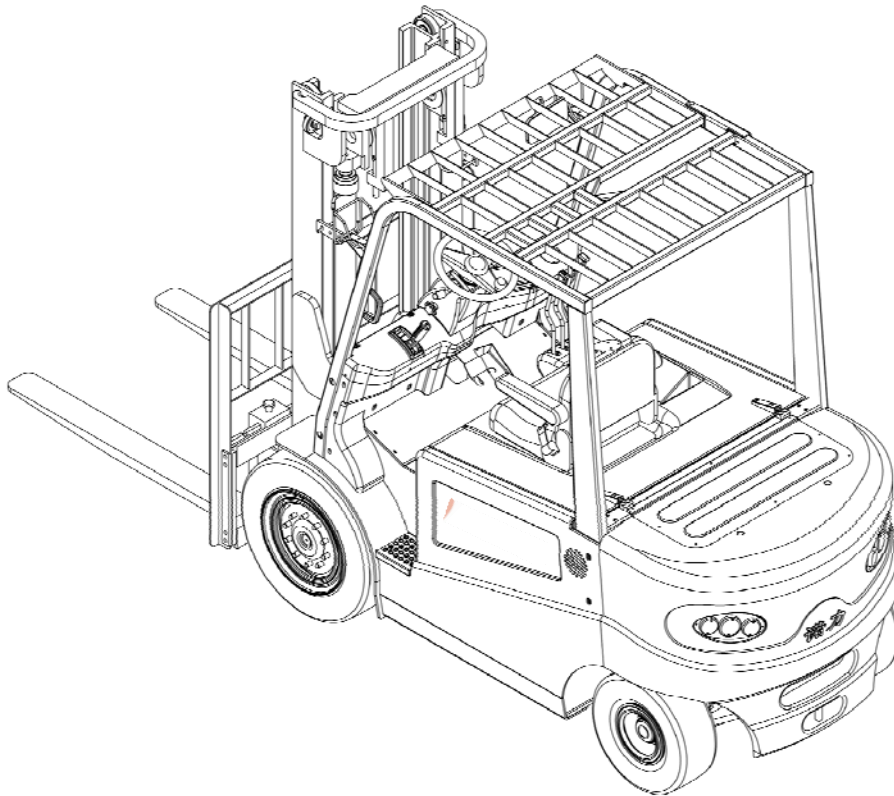


⚠ Warning

Operators should read and understand this manual and all warning labels on the forklift before using the forklift!

Keep the manual for future reference!



Parts List

FE4D40-50 SERIES

Battery Counterbalanced Forklift Truck

ZheJiang Noblelift Equipment Joint Stock Co.,Ltd

Foreword

Welcome to use the Noblelift counterbalanced forklift truck

1. This Parts List including all components and parts of FE4D40-50 battery counterbalanced forklift truck.
2. User can search for information by using table of contents and page numbers.

The type of truck means: ①—FE4D40 ②—FE4D45 ③—FE4D50

3. Please use specified parts from our company to ensure the quality of forklift when you repair or replace the parts.
4. When you need to order components from our company, please give clear information of model, manufacturing No., parts No. you need also the quantity.
5. Manufacturer reserves the right to modify our own products at any moment without notice or incurring in any sanction. It is suggested to get contact with our sales and spare parts staff if users want to know the up-to-date information of the products.

Contents

	Foreword.....	1
	Catalogue.....	2-3
1	Driving System.....	4-5
2	Gear Box.....	6-9
3	Traction Motor.....	10-11
4	Battery And Installation.....	12-13
5	Steering Device And Installation.....	14-15
6	Steering Column Assembly.....	16-17
7	Connecting Shaft Assembly.....	18-19
8	Steering Axle.....	20-23
9	Steering Cylinder.....	24-25
10	Steering Wheel.....	26-27
11	Drive Wheel	28-29
12	Power Connector Assembly.....	30-31
13	Electronic Control Assembly.....	32-33
14	Electric Component.....	34-35
15	Frame Installation.....	36-37
16	Counterweight.....	38-39
17	Hood Installation.....	40-41
18	Foot Brake Assembly.....	42-43
19	Hand Brake Assembly.....	44-45
20	Accelerator And Installation.....	46-47
21	Oil Tank	48-49
22	Lifting Motor And Installation.....	50-51
23	Lifting Motor.....	52-53
24	Valve Control Linkage(Two-Throw)	54-55
25	Valve Control Linkage (Three-Throw).....	56-57
26	Valve Control Linkage (Four-Throw).....	58-59
27	Hydraulic System.....	60-63
28	Lifting Pipeline System of Main Frame (Normal Mast)	64-65
29	Side Shifter & Pipeline Installation System (Normal Mast)	66-67
30	Fork.....	68-69

31	Fork Bracket (Normal Mast).....	70-71
32	Mast (Normal Mast)	72-77
33	Lift Cylinder (Normal Mast).....	78-81
34	Tilt Cylinder.....	82-83
35	Overhead Guard	84-85
36	Labels	86-87

NOBLIFT 诺力

Driving System

FE4D40-50

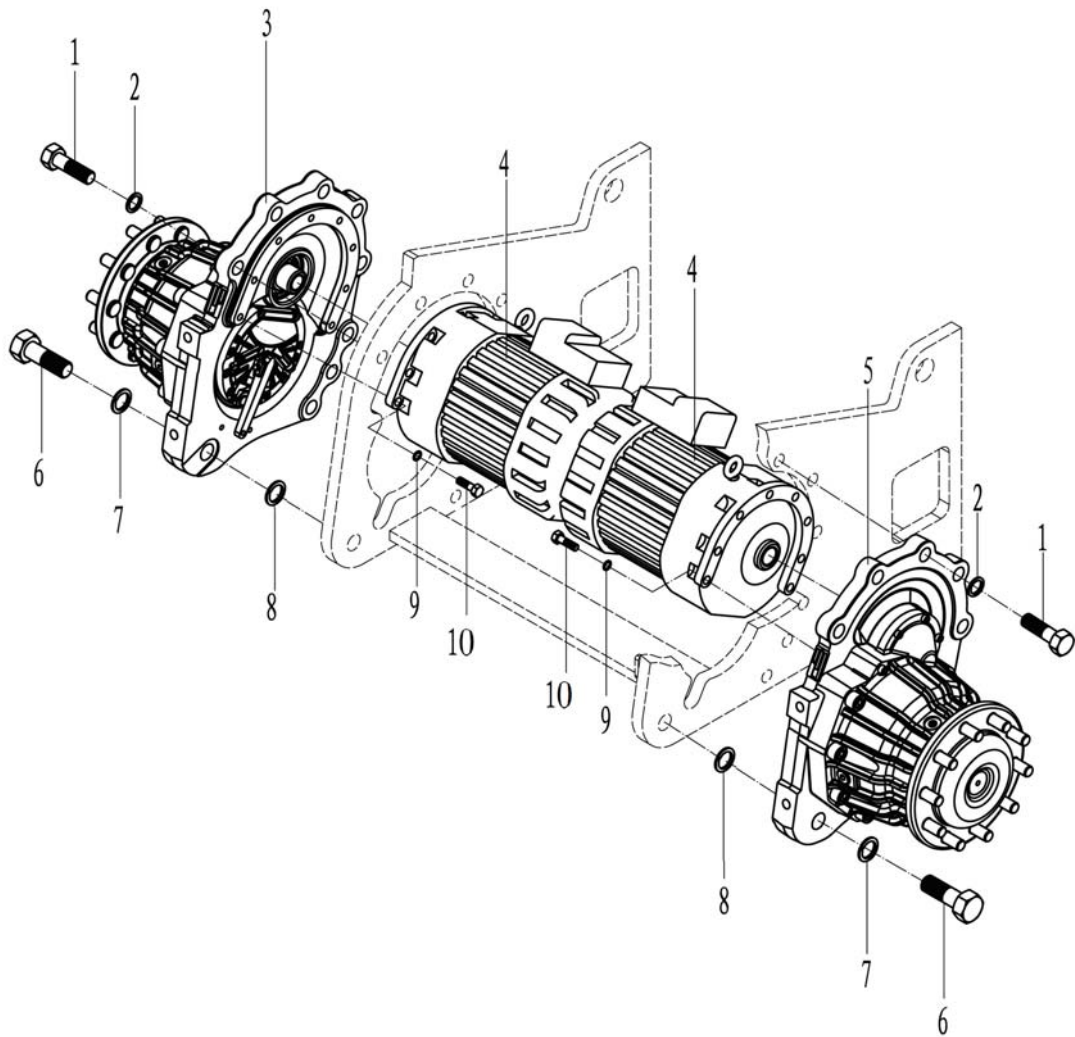


Figure 1

Figure 1 Driving System

No.	SN	Name	QTY	Remarks
1	0090000376	Bolt	16	
2	0000025056	Spring Washer	16	
3	9000007008	Gear Box(Right)	1	
4	9000007009	Traction Motor	2	
5	9000007010	Gear Box(Left)	1	
6	0090000375	Bolt	2	
7	0000025082	Spring Washer	2	
8	9000011598	Washer	2	
9	0000025043	Spring Washer	16	
10	0090000278	Bolt	16	

NOBUFT 诺力

Gear Box

FE4D40-50

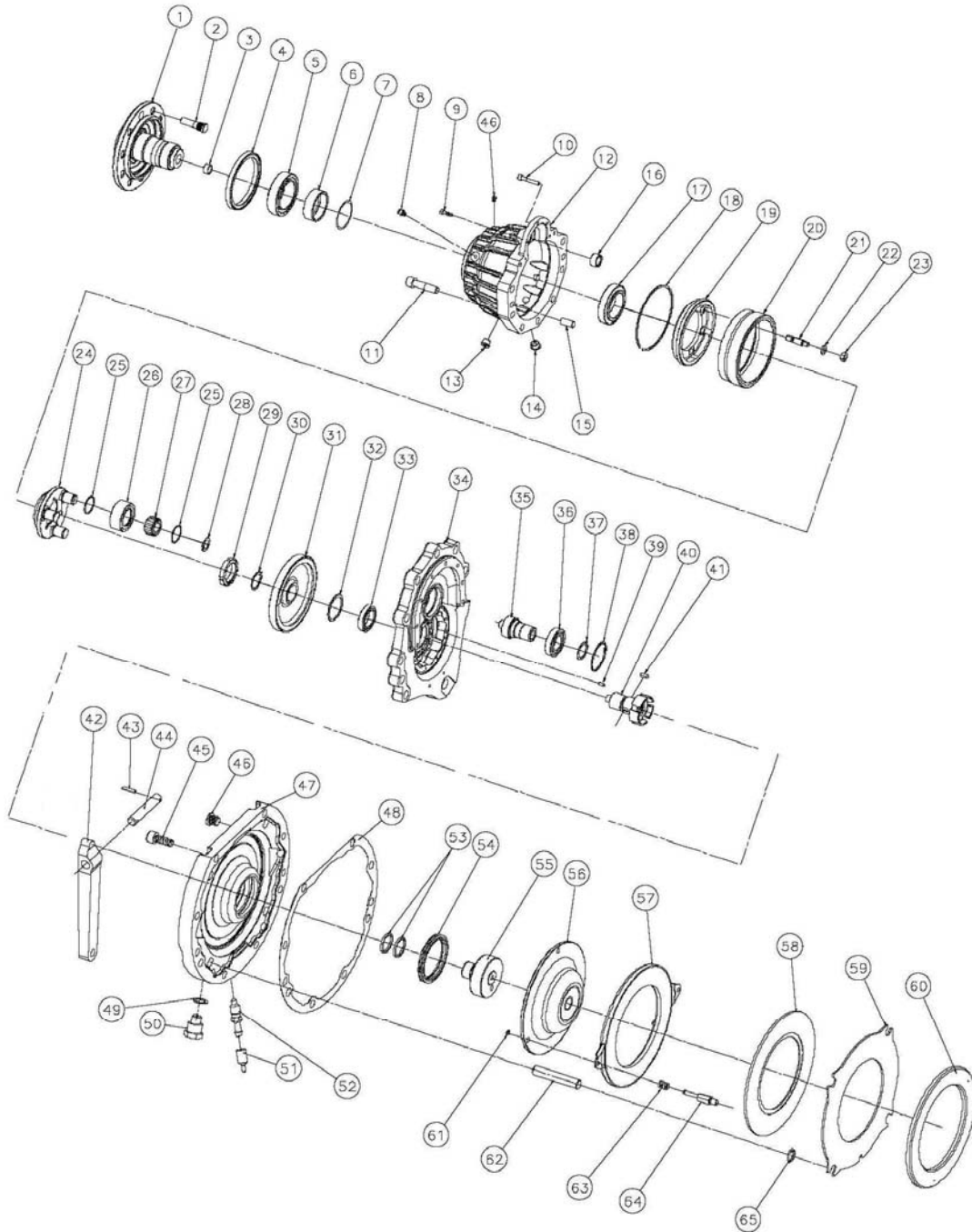


Figure 2

Figure 2

Gear Box

No.	SN	Name	QTY	Remarks
1	9000011154	Hub	1	
2	9000011155	Bolt	10	
3	9000011156	Needle Sleeve	1	
4	0090000678	Dust Ring	1	
5	0090000022	Bearing	1	
6	9000011157	Isolation Pad	1	
7	9000011158	Gasket	1	
8	9000011159	Vent Plug	1	
9	0000023817	Bolt	3	
10	0000023599	Bolt	2	
11	0090000027	Bolt	7	
12	9000011160	Box	1	
13	0090000679	Screw	4	
14	0090000680	Magnetic Plug	1	
15	0090000681	Cylindrical pin	2	
16	9000011161	Needle Sleeve	1	
17	0090000683	Bearing	1	
18	9000011162	Circlip	1	
19	9000011163	The Ring Gear Setup Disk	1	
20	9000011164	Ring Gear	1	
21	9000011165	Stud	6	
22	9000011166	Gasket	6	
23	0000024020	Nut	6	
24	9000011167	Planet Carrier	1	
25	9000011168	Circlip	6	
26	9000011169	Planetary Gear	3	
27	9000011170	Bearing	3	
28	0000026008	Circlip	3	
29	0090000693	Nut	1	
30	0090000694	Circlip	1	
31	9000011171	Spiral Gear	1	
32	9000011172	Circlip	1	
33	0000027065	Bearing	1	

Gear Box

FE4D40-50

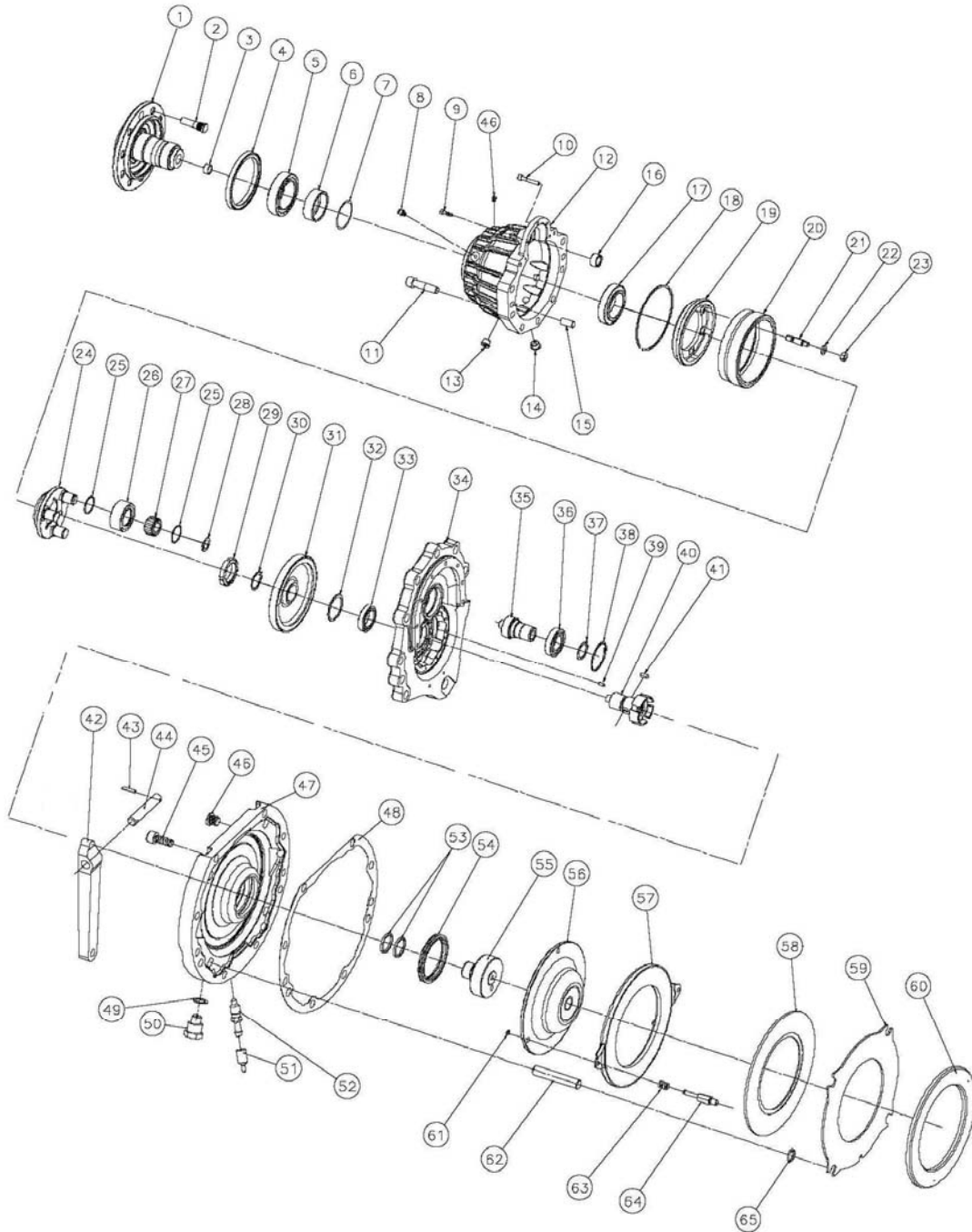


Figure 2

Figure 2

Gear Box

No.	SN	Name	QTY	Remarks
34	9000011173	Operculum	1	
35	9000011174	Spiral Gear	1	
36	0000027048	Bearing	1	
37	0000026049	Circlip	1	
38	0000026044	Circlip	1	
39	0090000298	Cylindrical pin	2	
40	9000011175	Washer Frame	1	
41	0090000695	Ordinary flat key	2	
42	9000011176	Brake Bar	1	
43	0090000697	Pin	2	
44	9000011177	Pin	1	
45	0000023147	Bolt	8	
46	0000037050	Plug Screw	5	
47	9000011178	Lid	1	
48	9000011179	Joint Washer	1	
49	0000025021	Seal Washer	1	
50	9000011180	Adapter Bolt	1	
51	9000011181	Drain Valve Cover	1	
52	9000011182	Bleed Valve	1	
53	9000011183	Gasket	2	
54	9000011184	Gasket	1	
55	9000011185	Piston	1	
56	9000011186	Elastic Plate	1	
57	9000011187	Platen	1	
58	9000011188	Friction Plate	7	
59	9000011189	Steel Plate	8	
60	9000011190	Support Plate	1	
61	9000011191	Circlip	2	
62	0090000682	Cylindrical pin	4	
63	9000011192	Spring	2	
64	9000011193	Bolt	2	
65	0000025041	Spring Washer	28	

Traction Motor

FE4D40-50

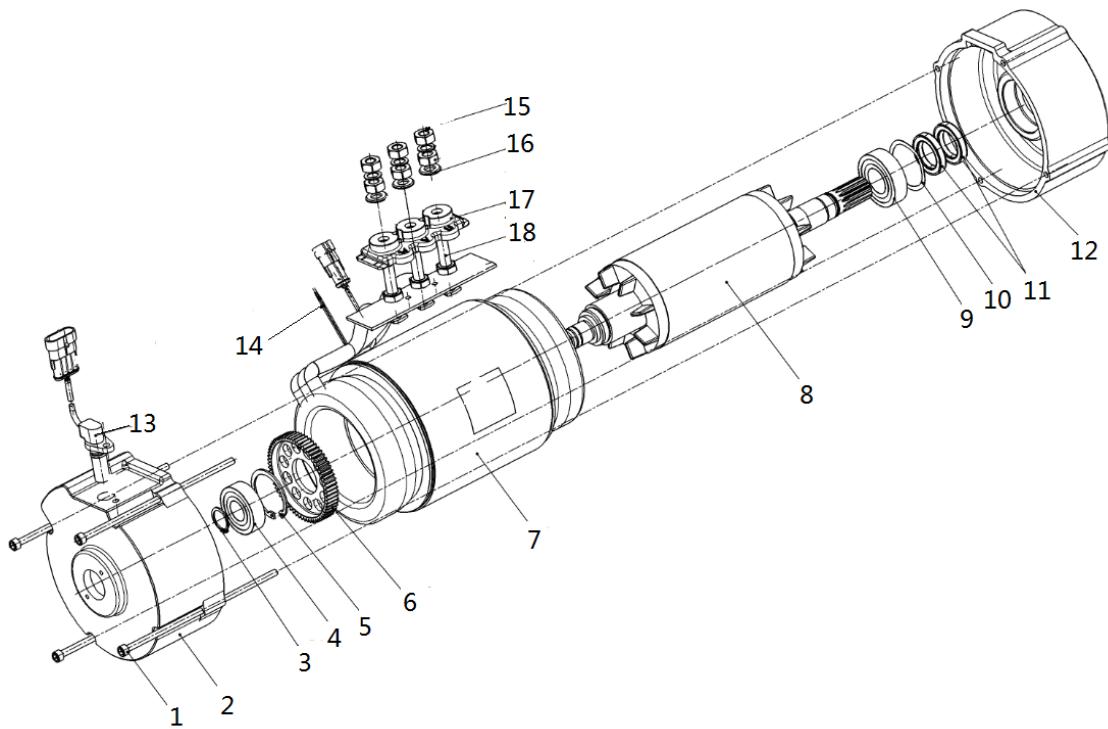


Figure 3

Figure 3

Traction Motor

No.	SN	Name	QTY	Remarks
1	9000011476	Connecting screw rod	4	
2	9000011477	A-flange	1	
3	9000011372	Waveform ejection plate	1	
4	0090000675	Bearing	1	
5	9000011389	Waveform ejection plate	1	
6	9000011478	Sensor gear wheel plate	1	
7	9000011479	Stator	1	
8	9000011480	Rotor	1	
9	0090000674	Bearing	1	
10	9000011389	Waveform ejection plate	1	
11	0090000676	Skeleton oil seal	2	
12	9000011481	B-flange	1	
13	9000011482	Speed sensor	1	
14	9000011483	Temperature sensor	1	
15	0090000240	Bolt	3	
16	0000025046	Spring washer	3	
17	9000011484	Terminal board	3	
18	9000011485	Connect the column	3	

Battery And Installation

FE4D40-50

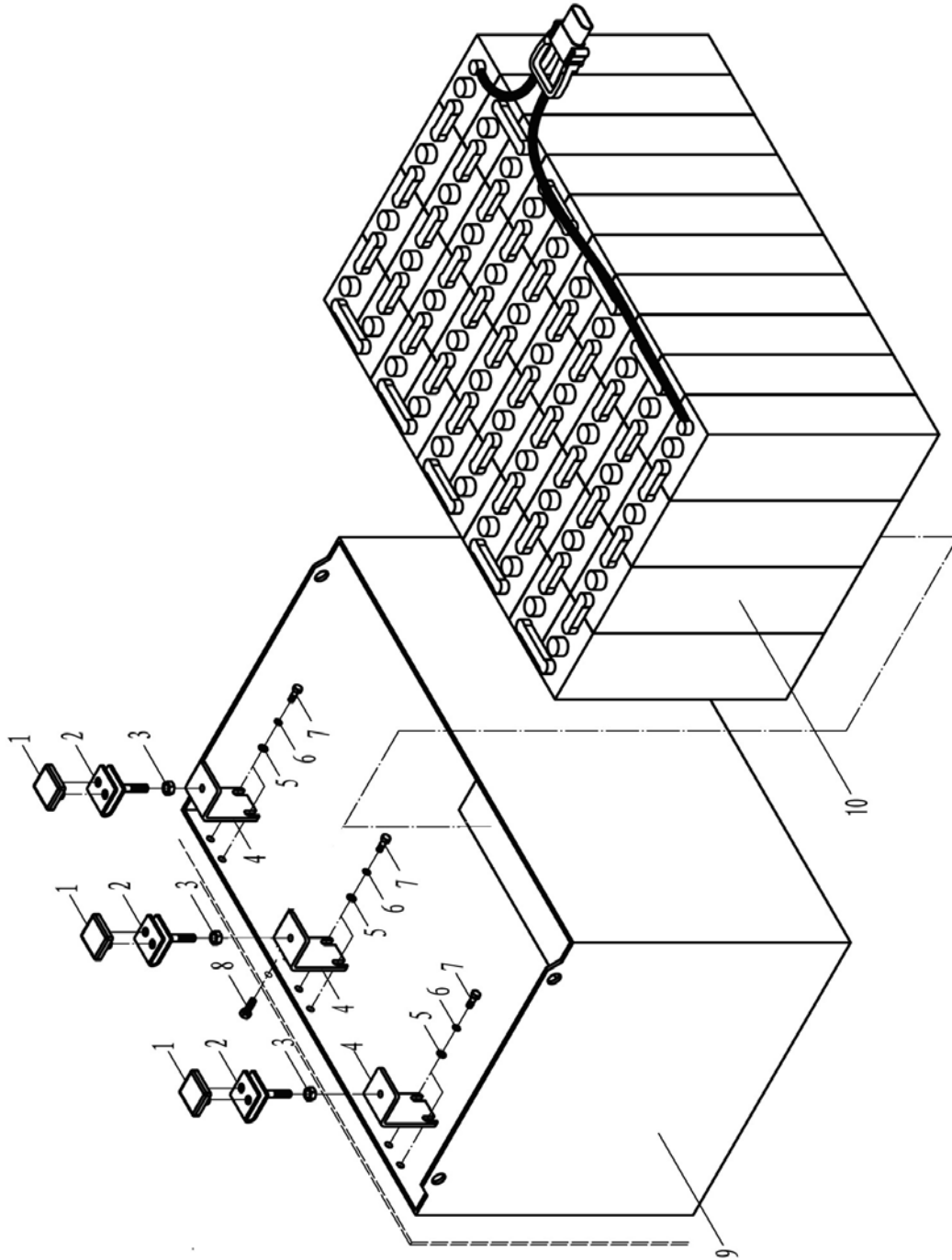


Figure 4

Figure 4

Battery And Installation

No.	SN	Name	QTY	Remarks
1	3046418003	Cushion Rubber	3	
2	9000006856	Holder	3	
3	0000024018	Nut	3	
4	9000006859	Holder	3	
5	0000025051	Washer	6	
6	0000025046	Spring Washer	6	
7	0000023230	Bolt	6	
8	0000023247	Bolt	1	
9	9000006852	Battery Box	1	
10	9000006853	Battery Monomer	40	720AH
	9000006854	Battery Monomer		900AH

Steering Device And Installation

FE4D40-50

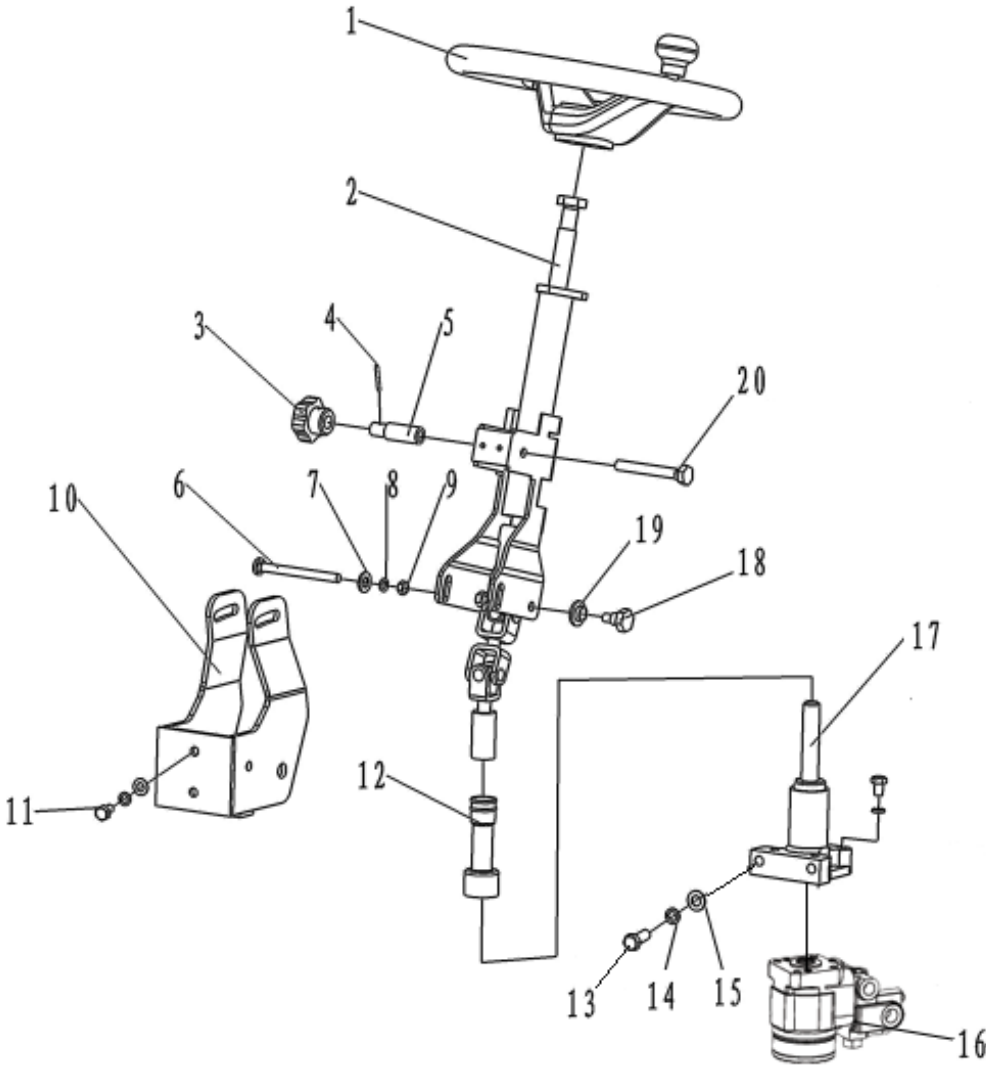


Figure 5

Figure 5 Steering Device And Installation

No.	SN	Name	QTY	Remarks
1	3044200004	Steering Wheel Assembly	1	
2	3044201003	Steering Column Assembly	1	
3	0000014001	Star Handle	1	
4	0000028071	Pin	1	
5	3044202002	Clamp Holder Shaft Sleeve	1	
6	3004202005	Bolt	1	
7	0000025047	Washer	3	
8	0000025041	Sping Washer	7	
9	0000024018	Nut	3	
10	3044201001	Bracket	1	
11	0000023355	Bolt	6	
12	3044218001	Jacket	1	
13	0000023241	Bolt	2	
14	0000025042	Spring Washer	2	
15	0000025048	Washer	2	
16	9000007111	Full Hydraulic Steering Gear	1	
17	3044200002	Coupling Shaft Assembly	1	
18	3004202004	Tacking Bolt	2	
19	3004219002	Spacer Ring	2	
20	3044202003	Clamp Holder Shaft	1	

Steering Column

FE4D40-50

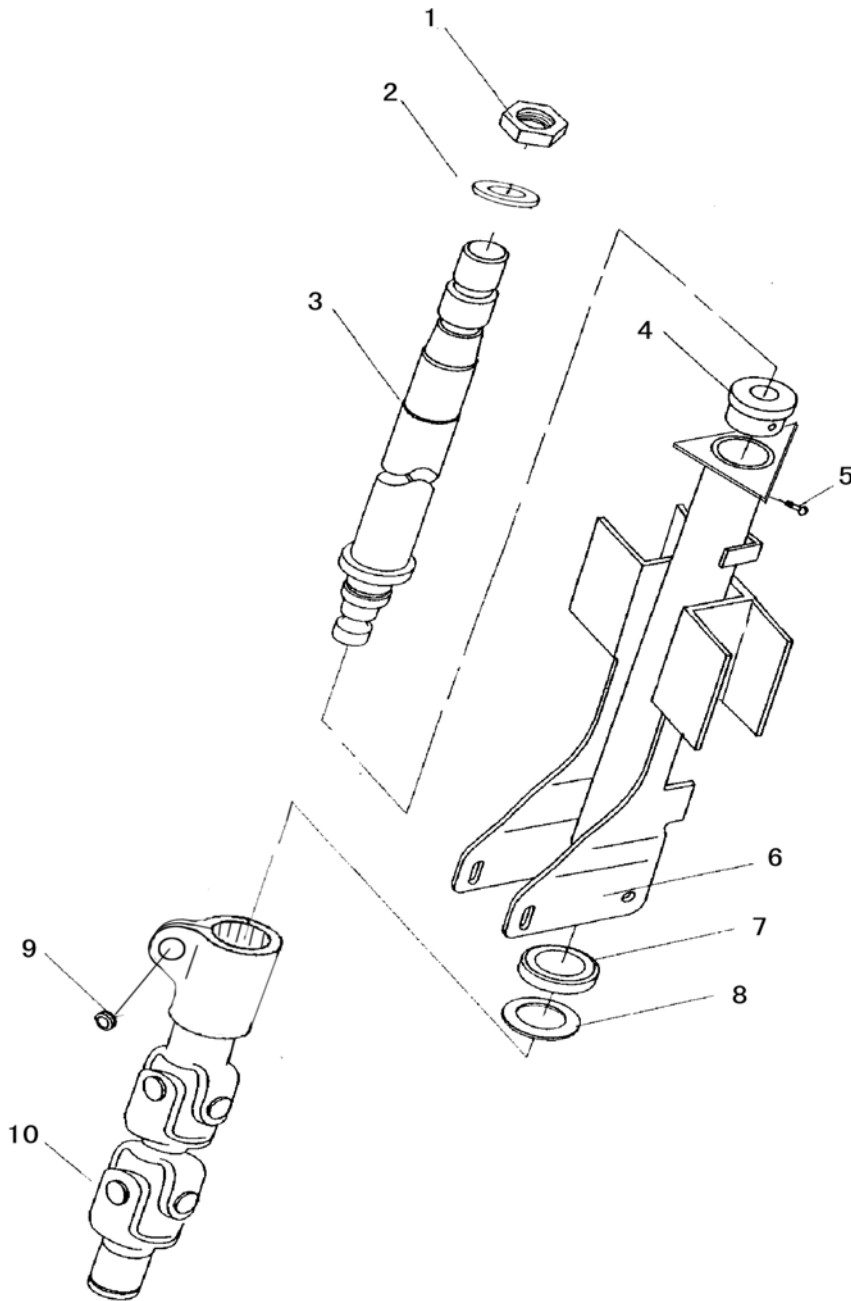


Figure 6

Figure 6

Steering Column Assembly

No.	SN	Name	QTY	Remarks
A	3044201003	Steering Column Assembly	1	
1	0000024129	Nut	1	
2	0000025049	Washer	1	
3	9000010828	Steering Shaft	1	
4	3044202004	Nylon Sleeve	1	
5	0090000209	Screw	1	
6	9000010829	Steering Column	1	
7	0000027068	Bearing	1	
8	0000026005	Circlip For Shaft	1	
9	0000023223	Bolt	1	
10	3044201004	Cardan	1	

Connecting Shaft Assembly

FE4D40-50

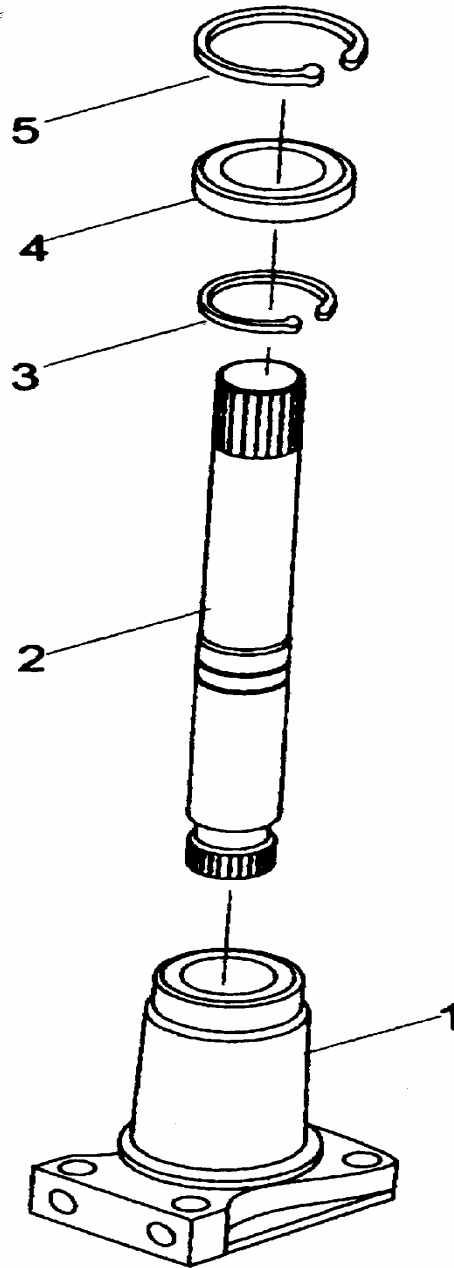


Figure 7

Figure 7

Connecting Shaft Assembly

No.	SN	Name	QTY	Remarks
A	3044200002	Connecting Shaft Assembly	1	
1	3044205001	Adapting Flange	1	
2	3044207002	Connecting Shaft	1	
3	0000026003	Circlip For Shaft	1	
4	0000027016	Bearing	1	
5	0000026012	Circlip For Hole	1	

NOBLIFT 诺力

Steering Axle

FE4D40-50

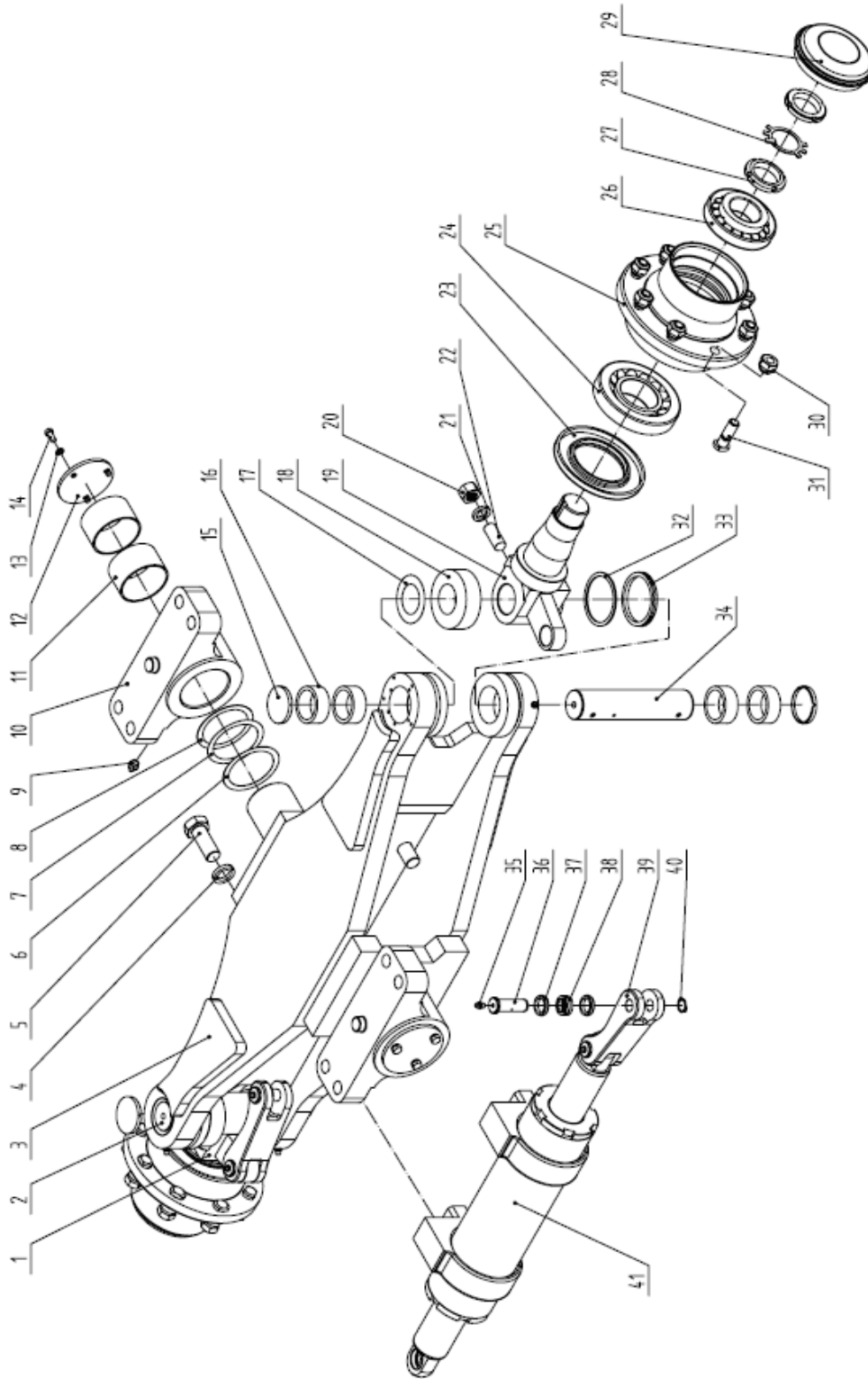


Figure 8

Figure 8

Steering Axle

No.	SN	Name	QTY	Remarks
1	9000011195	Left Steering Knuckle Assembly	1	
2	9000011194	Master Pin	1	
3	9000011196	Steering Of The Bridge	1	
4	0000025057	Spring Washe	4	
5	0090000706	Bolt	4	
6	9000011197	Adjusting Shim	2	
7	9000011198	Adjusting Shim	2	
8	9000011199	Adjusting Shim	2	
9	0090000176	Oil Cup	2	
10	9000011200	Rear Axle Support	2	
11	9000011201	Steel Back Liner	4	
12	9000011202	Shaft End Baffle	2	
13	0000025045	Spring Washer	6	
14	0000023183	Bolt	6	
15	9000011203	Seal-Capping	4	
16	0090000707	Multi-roll Bearing	8	
17	9000011286	Adjusting Shim	2	
18	0090000708	Bearing	2	
19	9000011204	Right Steering Knuckle Assembly	1	
20	0000024036	Nut	2	
21	0000025055	Spring Washer	2	
22	0090000709	Screw	2	
23	0090000710	Seal	2	
24	0090000684	Bearing	2	
25	9000011205	Hub	2	
26	0090000685	Bearing	2	
27	0090000711	Round Nut	4	
28	0090000713	Stop Washer	2	
29	9000011206	Wheel Hub Cover	2	
30	9000011207	Hub Nut	16	
31	9000011208	Hub Bolt	16	
32	9000011209	Gasket	2	

Steering Axle

FE4D40-50

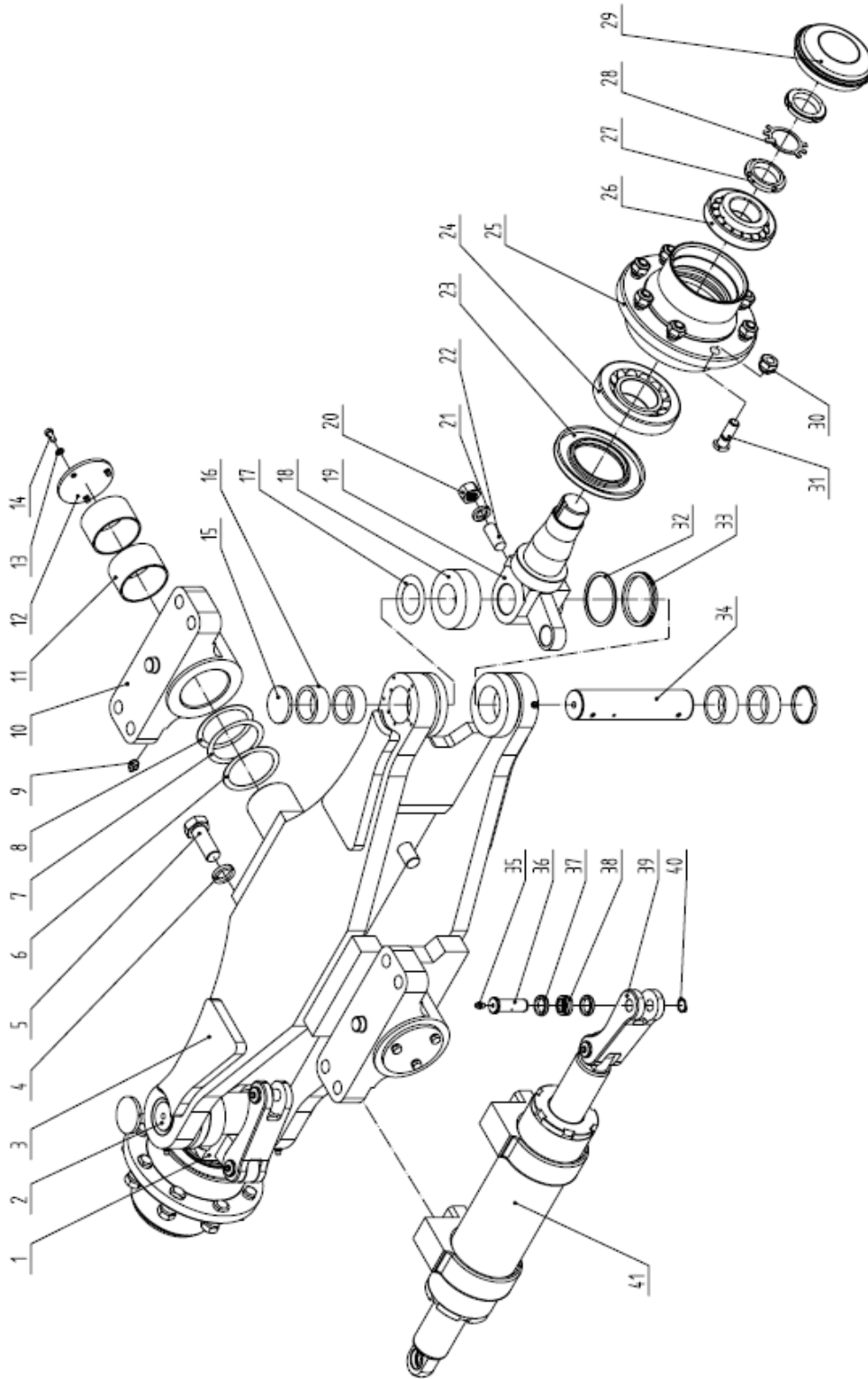


Figure 8

Figure 8

Steering Axle

No.	SN	Name	QTY	Remarks
33	9000011210	seal	2	
34	9000011211	Right King Pin	1	
35	0090000716	Oil Cup	7	
36	9000011212	Link Pin	4	
37	9000011213	Bush	6	
38	0000027055	Bearing	4	
39	9000011214	Connecting Rod	2	
40	0090000625	Circlip For Shaft	4	
41	9000011215	Steering Cylinder	1	

NOBLIFT 诺力

Steering Cylinder

FE4D40-50

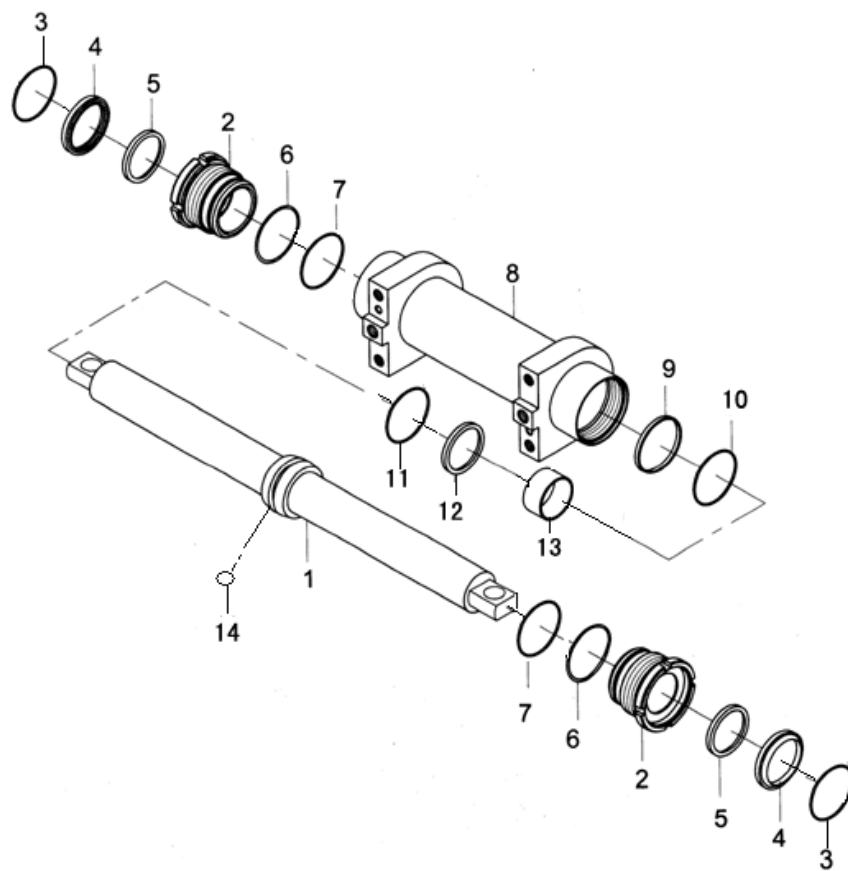


Figure 9

Figure 9

Steering Cylinder

No.	SN	Name	QTY	Remarks
1	9000011216	Piston Rod	1	
2	9000011217	Cylinder Head	2	
3	9000011218	Dust Ring	2	
4	9000011219	Seal Ring	2	
5	9000011220	Piston Rod With Guide Ring	4	
6	9000011221	Check Ring	2	
7	0090000717	O-Ring	2	
8	9000011222	Cylinder Block	1	
9	9000011223	T's KangGe To Ring	1	
10	0090000718	O-Ring	1	
11	9000011224	Piston With Guide Ring	1	
12	9000011225	Piston With Guide Ring	1	
13	9000011226	Piston	1	
14	0000037001	Steel Ball	1	

Steering Wheel

FE4D40-50

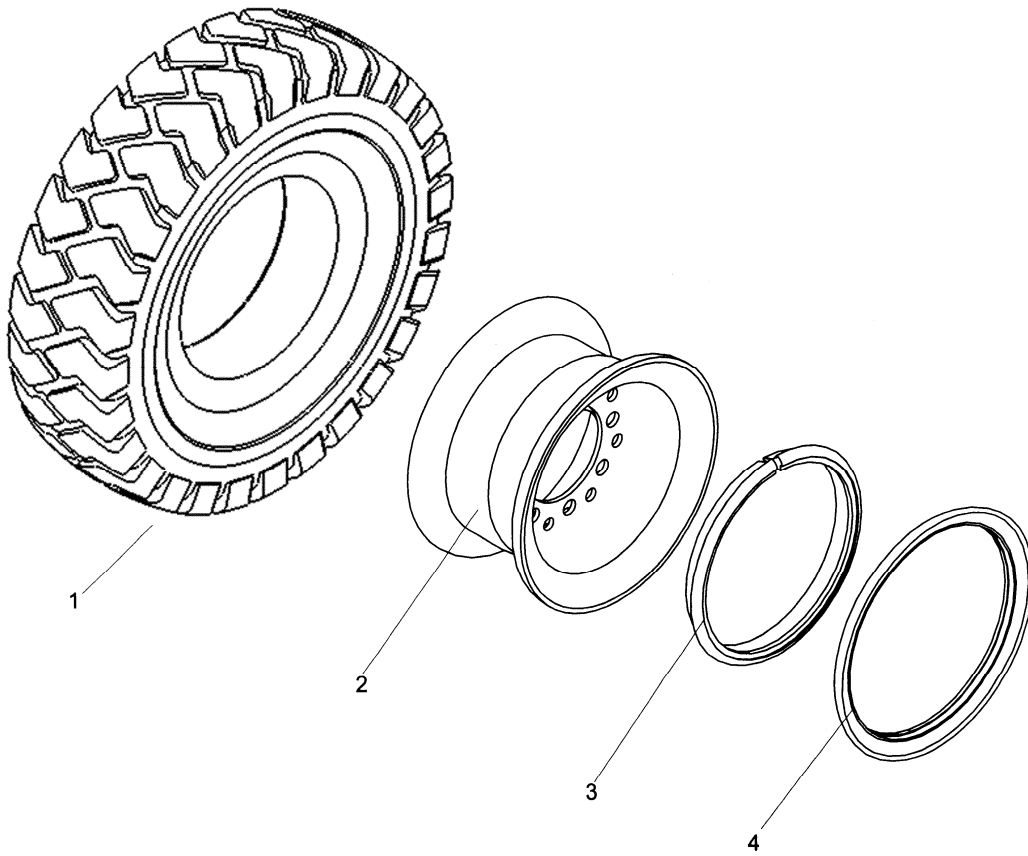


Figure 10

Figure 10

Steering Wheel

No.	SN	Name	QTY	Remarks
1	9000007203	Tire Assembly	2	
2	9000011227	Tire Rim	2	
3	9000011228	Locking Collar	2	
4	9000011229	Check Ring	2	

NOBLIFT 诺力

Drive Wheel

FE4D40-50

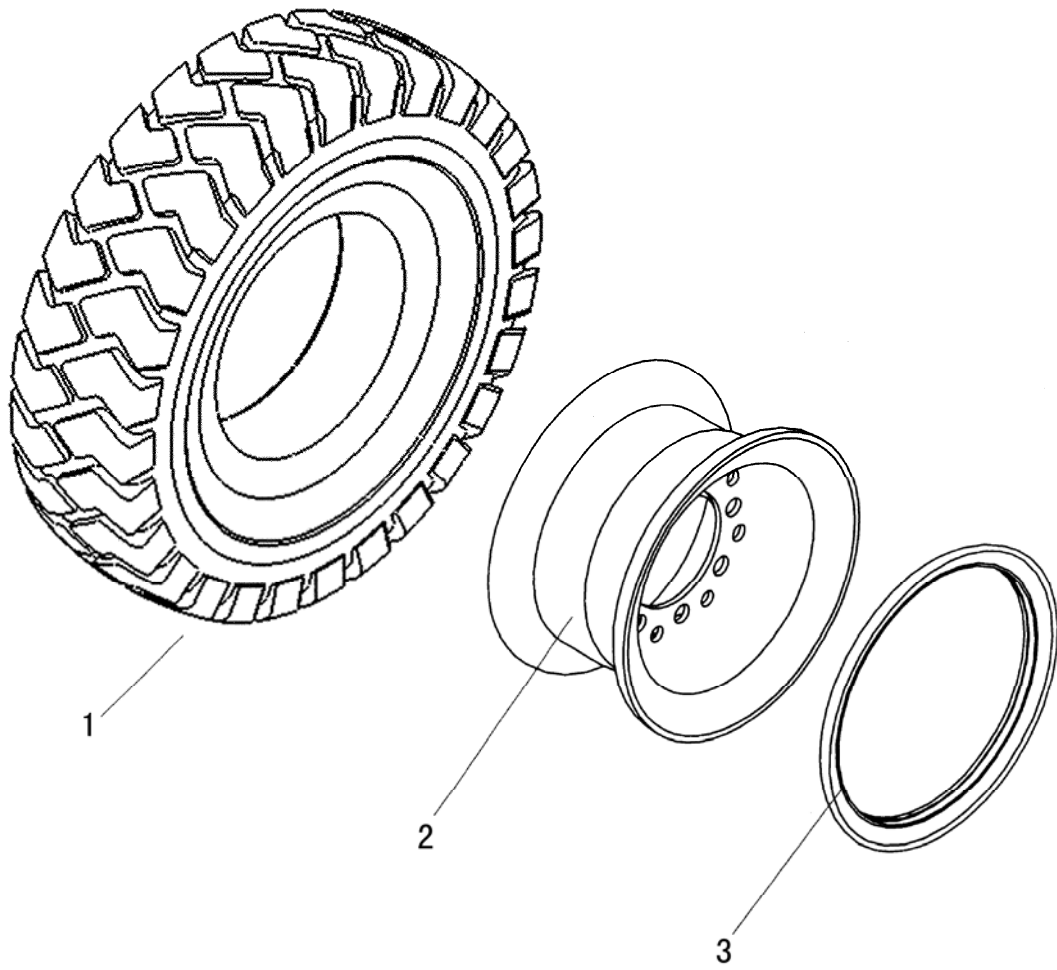


Figure 11

Figure 11

Drive Wheel

No.	SN	Name	QTY	Remarks
1	9000007199	Solid Tyre	2	
2	9000011230	Imbase	2	
3	9000011231	Check Ring	2	

NOBLIFT 诺力

Power Connector Assembly

FE4D40-50

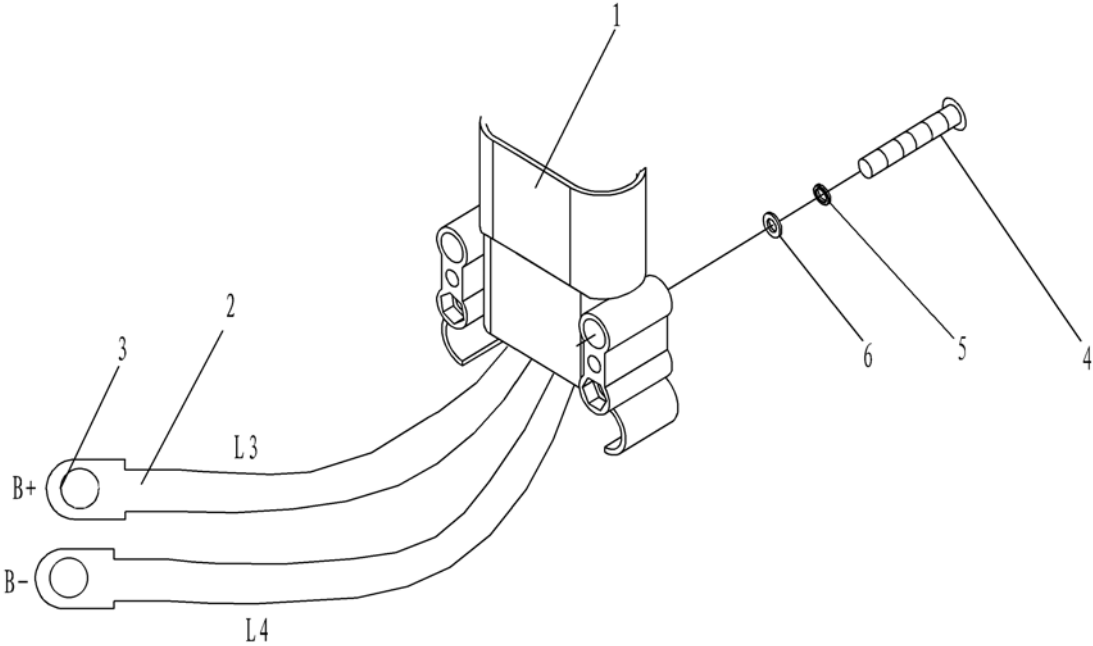


Figure 12

Figure 12

Power Connector Assembly

No.	SN	Name	QTY	Remarks
1	3042434011	Connector Male Head	1	
2	3042433001	Cable	2	
3	3042434013	Binding Post	2	
4	0000023294	Screw	4	
5	0000025045	Spring Washer	4	
6	0000025050	Washer	4	

NOBLIFT 诺力

Electronic Control Assembly

FE4D40-50

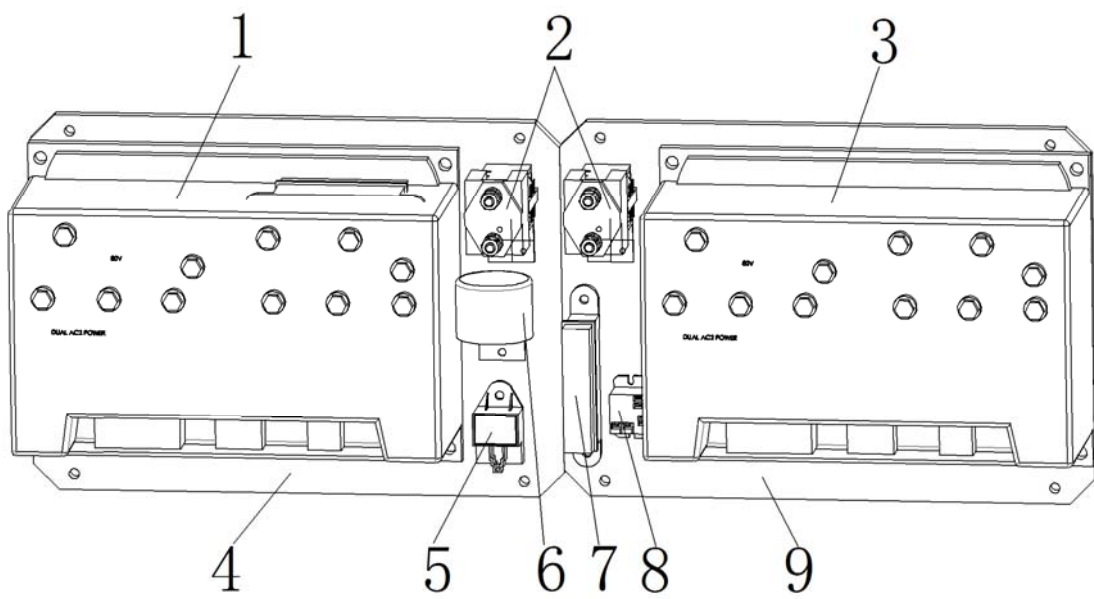


Figure 13

Figure 13

Electronic Control Assembly

No.	SN	Name	QTY	Remarks
1	9000006840	Traction controller	8	
2	3042434010	Contacto	8	
3	9000006837	Oil pump controller	8	
4	9000006838	Aluminium plate	1	
5	3002434005	Flasher	1	
6	9000004079	Up buzze	2	
7	3042434007	Fuse block	4	
8	3072434010	Relay	5	
9	9000006839	Aluminium plate	5	

NOBLIFT 诺力

Electric Component

FE4D40-50

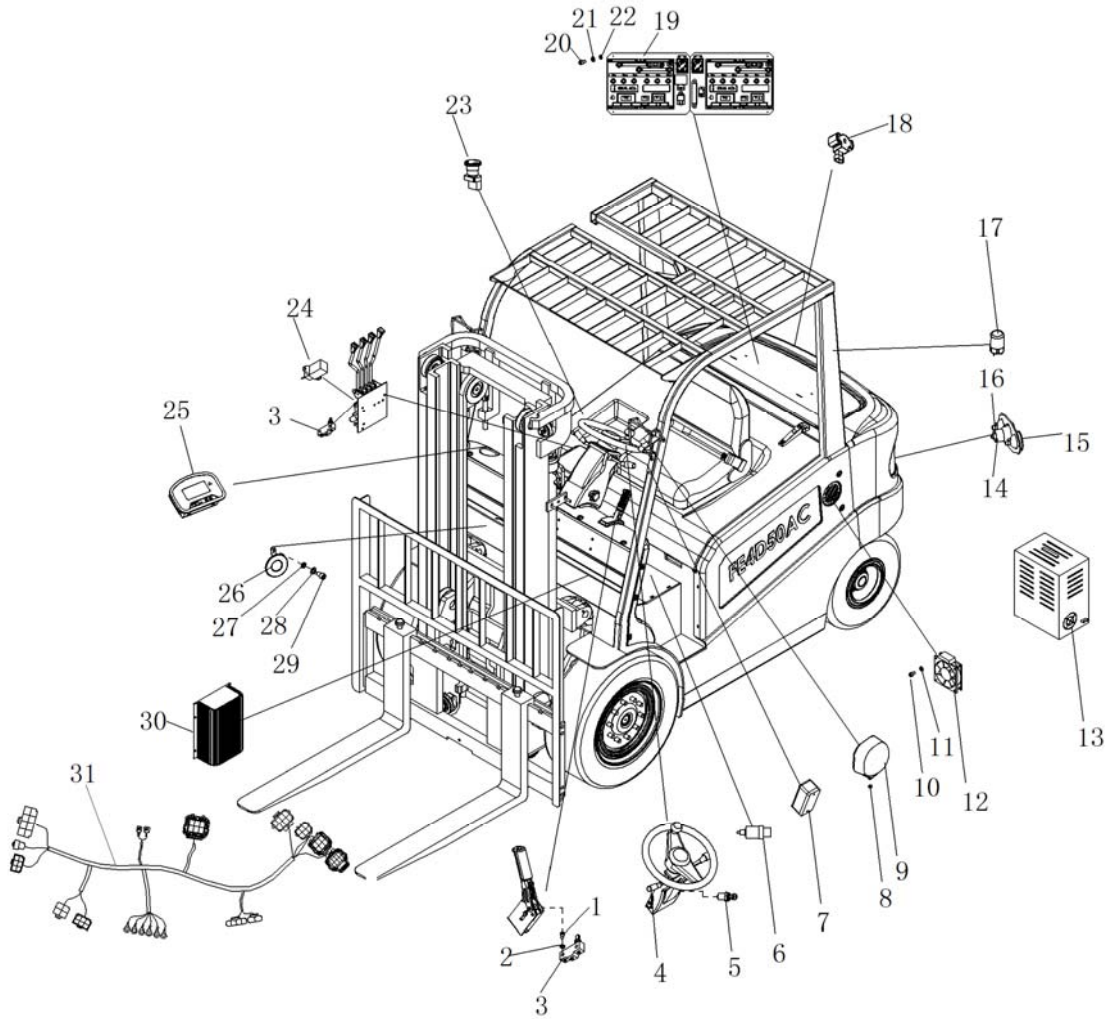


Figure 14

Figure 14

Electric Component

No.	SN	Name	QTY	Remarks
1	0000023188	Screw	2	
2	0000025037	Flat washer	2	
3	3002434003	Micro-move switch	4	
4	9000006810	Combination switch	1	
5	9000009963	Key switch	1	
6	3002434014	Breaking lamps switch	1	
7	3002434001	Front lamp let assembly	2	
8	0000024017	Nut	2	
9	3002434002	Headlights assembly	2	
10	0000023130	Screw	8	
11	0000024017	Nut	8	
12	1110434003	Fan	2	
13	9000006832	Charger	1	
14	9000006833	After Headlight	2	
15	9000006834	Rear turn light	2	
16	9000006835	Rear Brake Lamp	2	
17	3042434003	Warning Light	1	
18	3052434004	Angle Potentiometer wabash	1	
19	9000006836	Electronic Control	1	
20	0000023223	Bolt	8	
21	0000025041	Spring washer	8	
22	0090000205	Flat washer	8	
23	9000010878	REMA Emergency Stop Switch	1	
24	9000006842	CAN	1	
25	3002434027	Ascension Sensor	1	
26	1000434015	Horn	1	
27	0000023141	Screw	1	
28	0000025050	Flat washer	1	
29	0000025045	Spring washer	1	
30	3042434005	Isolation converter	1	
31	9000006843	Wire	1	

Frame Installation

FE4D40-50

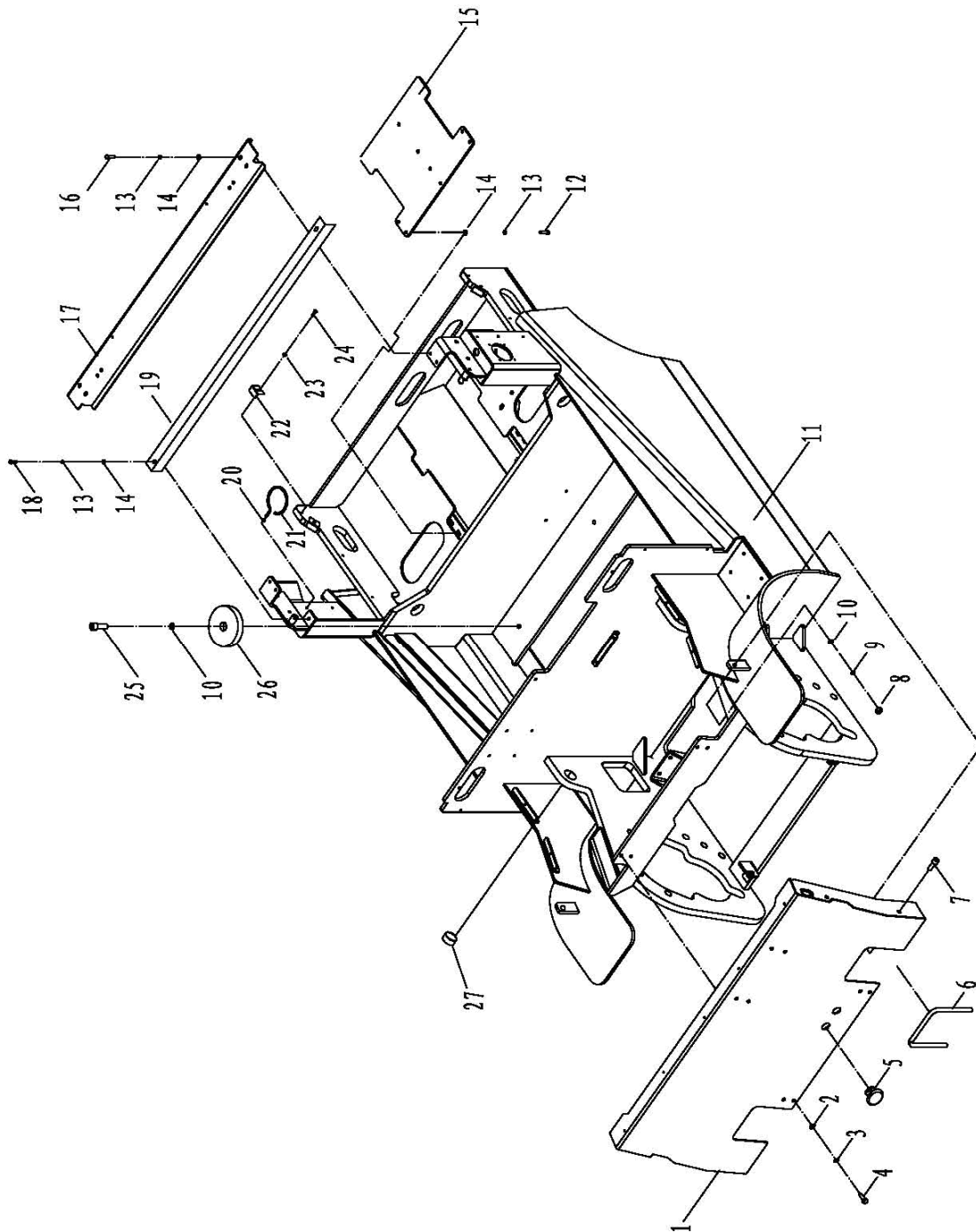


Figure 15

Figure 15

Frame Installation

No.	SN	Name	QTY	Remarks
1	9000006922	Instrument Stand	1	
2	0000025047	Washer	4	
3	0000025041	Spring Washer	4	
4	0000023263	Bolt	4	
5	3045118001	Rubber-Cover	2	
6	9000007186	Sealing Strips	2	
7	0000023509	Bolt	2	
8	0000024038	Nut	2	
9	0000025042	Spring Washer	2	
10	0000025048	Washer	2	
11	9000006921	Frame	1	
12	0000023231	Bolt	4	
13	0000025046	Spring Washer	10	
14	0000025051	Washer	10	
15	9000006976	Bridge plate	1	
16	0090000377	Screw	4	
17	9000007177	Battery Case Cover Installation Beam	1	
18	0000023230	Bolt	2	
19	9000006978	Swaybars	1	
20	0000024026	Nut	2	
21	9000006977	Snap Ring	2	
22	9000006820	Adjusting Shim	4	
23	0000025045	Spring Washer	4	
24	0000023176	Bolt	4	
25	0000023273	Bolt	4	
26	3041418001	Shock Pad	4	
27	9000006928	Bush	2	

Counterweight

FE4D40-50

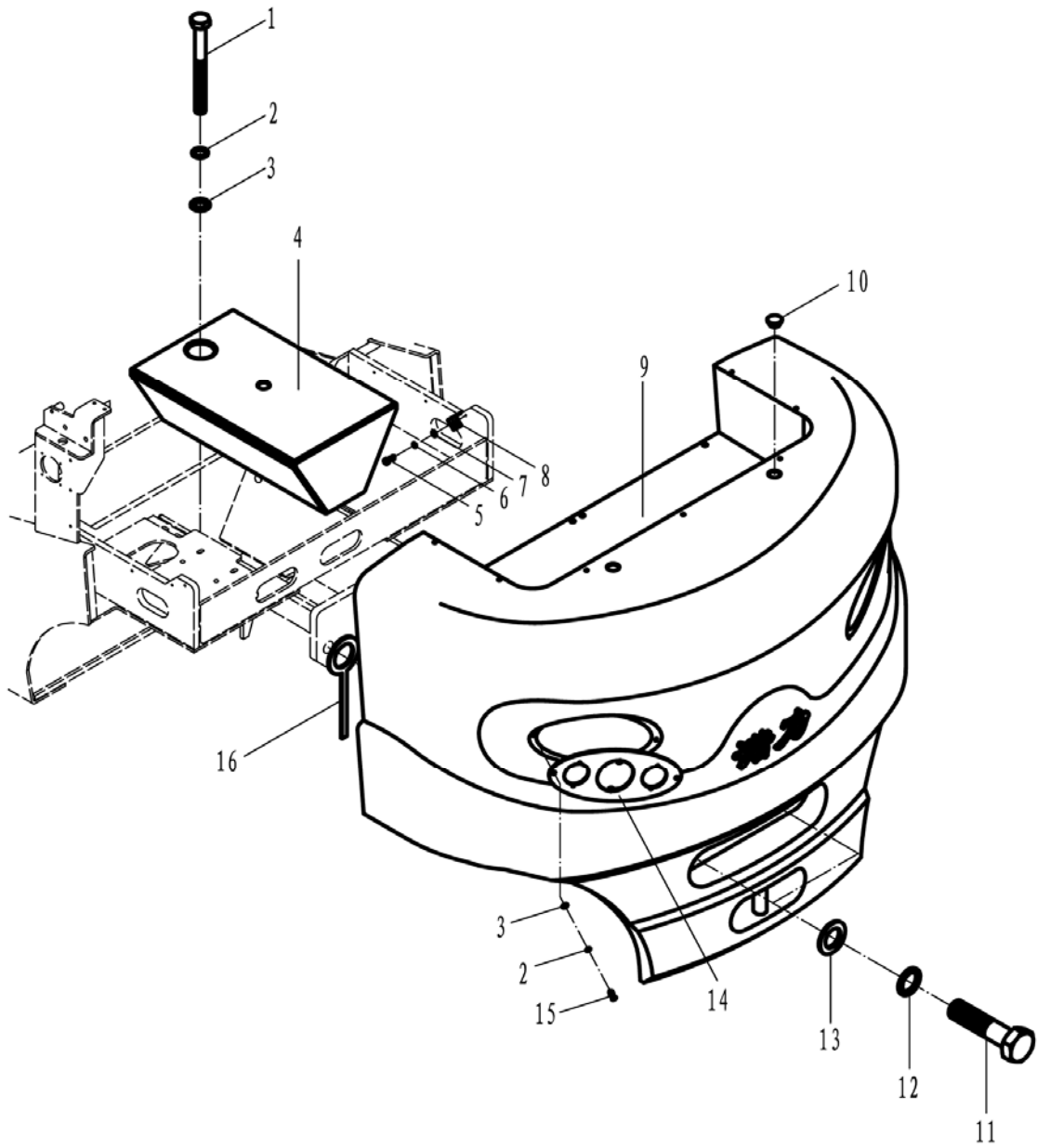


Figure 16

Figure 16

Counterweight

No.	SN	Name	QTY	Remarks
1	0000023917	Bolt	1	Ⓑ Ⓒ
2	0000025057	Spring Washer	1	Ⓑ Ⓒ
3	0000025067	Washer	1	Ⓑ Ⓒ
4	9000006825	Vice Counterbalance	1	Ⓑ Ⓒ
5	0000023176	Bolt	4	
6	0000025045	Spring Washer	8	
7	0000025050	Washer	4	
8	9000006820	Adjusting Shim	2-4	
9	9000006822	Counterweight	1	Ⓒ
	9000011232	Counterweight		Ⓐ Ⓑ
10	9000006821	Rubber Stopper	2	
11	0090000722	Bolt	2	
12	0090000723	Spring Washer	2	
13	0090000724	Washer	2	
14	9000006823	Tail Light Plate	2	
15	0000023555	Screw	4	
16	9000006824	Adjustable Pad	2-4	

Hood Installation

FE4D40-50

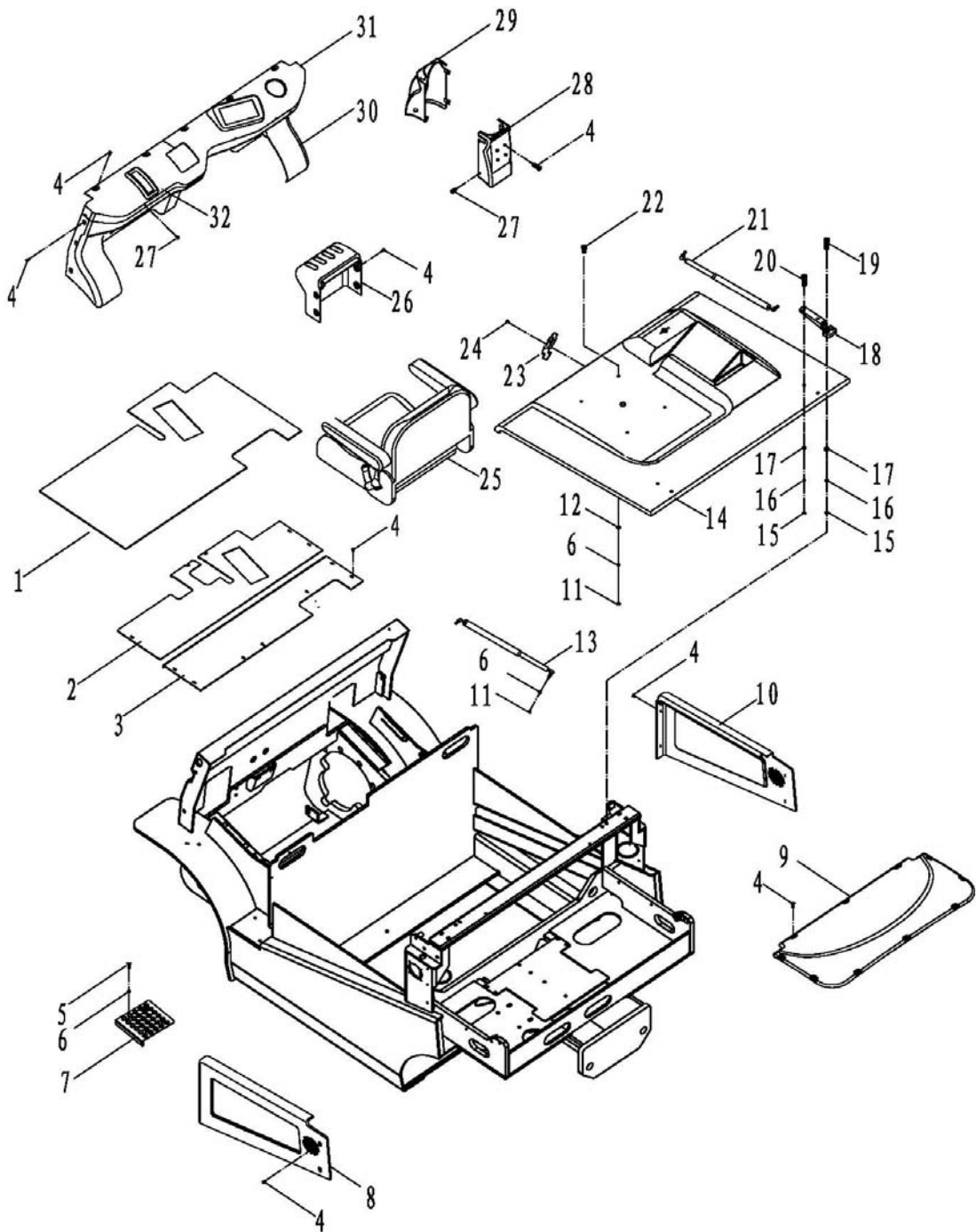


Figure 17

Figure 17

Hood Installation

No.	SN	Name	QTY	Remarks
1	9000007182	Pedal Pad	1	
2	9000007184	Front Plate Welded	1	
3	9000007183	Floor After	1	
4	0000023192	Screw	42	
5	0090000377	Screw	8	
6	0000025046	Spring Washer	14	
7	9000007173	Pedal	1	
8	9000007181	Left Side Cover	1	
9	9000007179	Back Shroud	1	
10	9000007174	Right Side Cover	1	
11	0000024026	Nut	6	
12	0000025051	Washer	4	
13	3046400006	Locking Gas Spring	1	
14	9000007175	Battery Cover	1	
15	0000024018	Nut	8	
16	0000025041	Spring Washer	8	
17	0000025047	Washer	8	
18	3006400005	Hinge	2	
19	0000023129	Bolt	4	
20	0000023379	Bolt	4	
21	3046400003	Gas Spring	1	
22	0000023255	Bolt	4	
23	3006400003	Hasp	1	
24	0000023131	Screw	1	
25	3066800001	Seat	1	
26	9000007172	Multiple Valve Cover	1	
27	0000023721	Screw	12	
28	3046403009	Steering Column After The Shell	1	
29	3046403008	Steering Column BeforeThe Shell	1	
30	9000007169	Instrument Frame Under The Hood Shell	1	
31	9000007171	Instrument Rack Casing Right	1	
32	9000007170	Instrument Shell On The Left	1	

Hand Brake Assembly

FE4D40-50

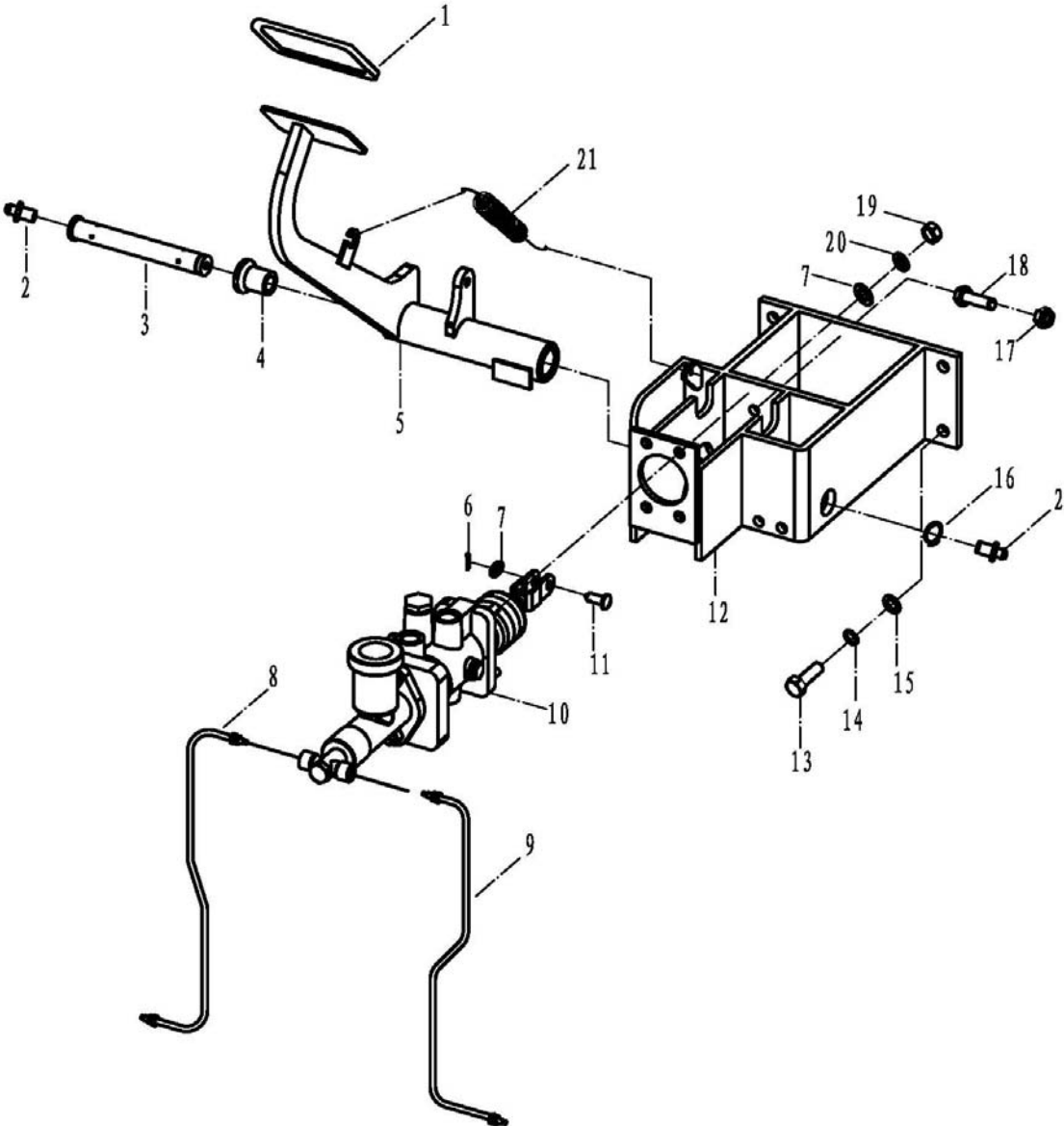


Figure 18

Figure 18

Hand Brake Assembly

No.	SN	Name	QTY	Remarks
1	3045718001	Pedal Pad	1	
2	0000030028	Oil Cup	1	
3	9000007001	Foot Brake Pin Shaft	1	
4	3045703001	Pin Nylon Sleeve	1	
5	9000006986	Brake Pedal Welded Together	1	
6	0090000133	Pin	1	
7	0000025051	Washer	5	
8	9000007002	Brake Tube I	1	
9	9000007004	Brake Tube II	1	
10	9000006985	Hydraulic Power Brake Assembly	1	
11	0090000176	Pin	1	
12	9000006992	Brake Bracket Welded Together	1	
13	0000023222	Bolt	4	
14	0000025041	Spring Washer	4	
15	0000025047	Washer	4	
16	0000026013	Circlip	1	
17	0000023224	Bolt	1	
18	0000024018	Nut	1	
19	0000024026	Nut	4	
20	0000025046	Spring Washer	4	
21	3015731001	Tension Spring	1	

Foot Brake Assembly

FE4D40-50

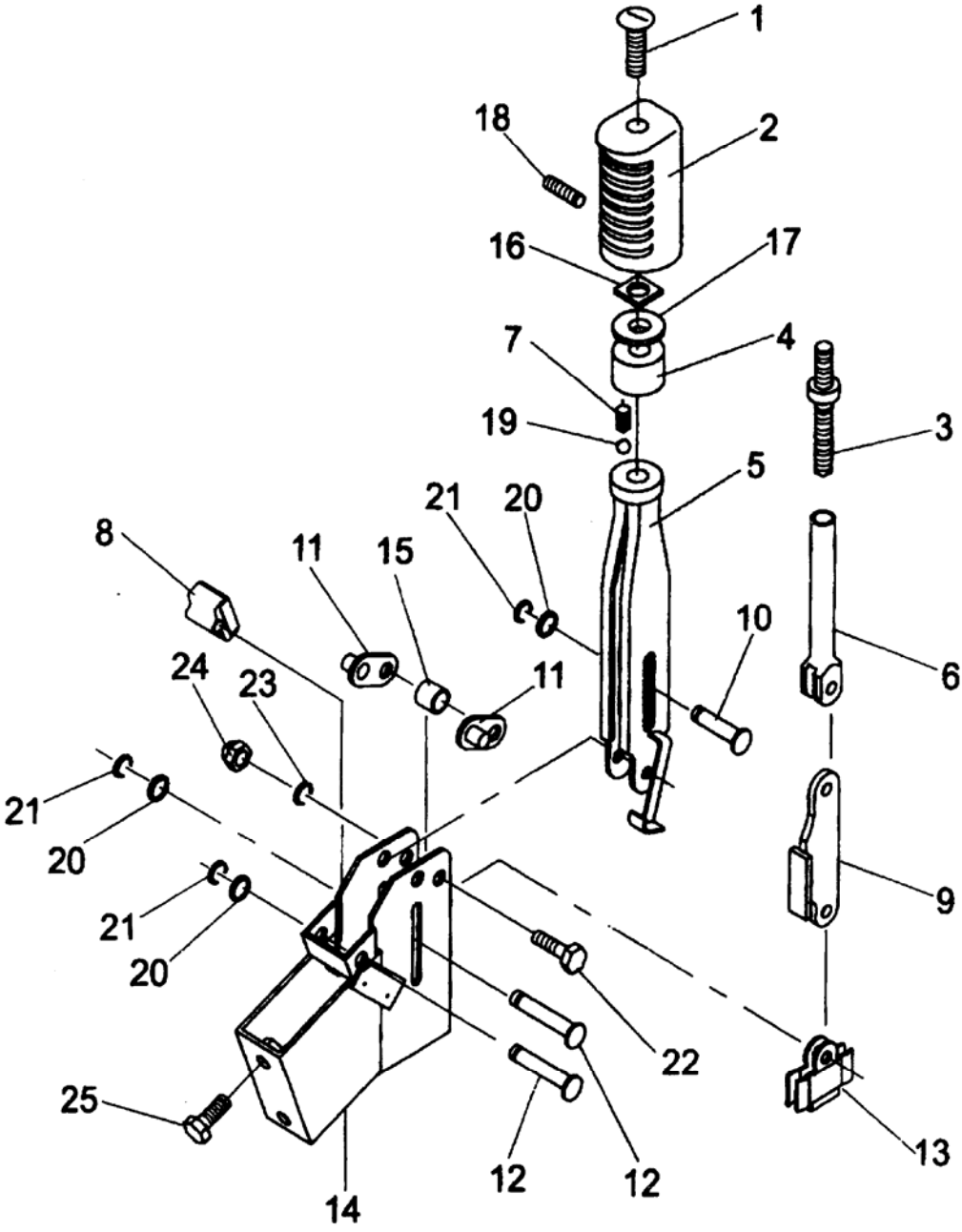


Figure 19

Figure 19

Foot Brake Assembly

No.	SN	Name	QTY	Remarks
A	3005500003	Hand Brake	1	
1	3005502002	Regulating Stem	1	
2	3005503001	Handle Head	1	
3	3005502003	Screw	1	
4	3005504001	Handle Seat	1	
5	3005502004	Brake Handle Body	1	
6	3005502005	Drag Link Body	1	
7	3005531001	Spring	1	
8	3005502006	Limited Block	1	
9	3005502007	Pull Board Assembly	1	
10	3005528001	Pin	1	
11	3005501001	Support Plate Assembly	2	
12	3005528002	Pin	2	
13	3005504002	Line Set	1	
14	3005504003	Center Bearing	1	
15	3005525001	Gasket	1	
16	0000024030	Square Nut	1	
17	0000025061	Washer	1	
18	0000023179	Screw	1	
19	0000037001	Steel Ball	1	
20	0000025051	Washer	6	
21	0000026018	Split Washer	3	
22	0000023244	Bolt	1	
23	0000025041	Spring Washer	3	
24	0000024031	Acorn Nuts	1	
25	0000023224	Bolt	2	

Accelerator And Installation

FE4D40-50

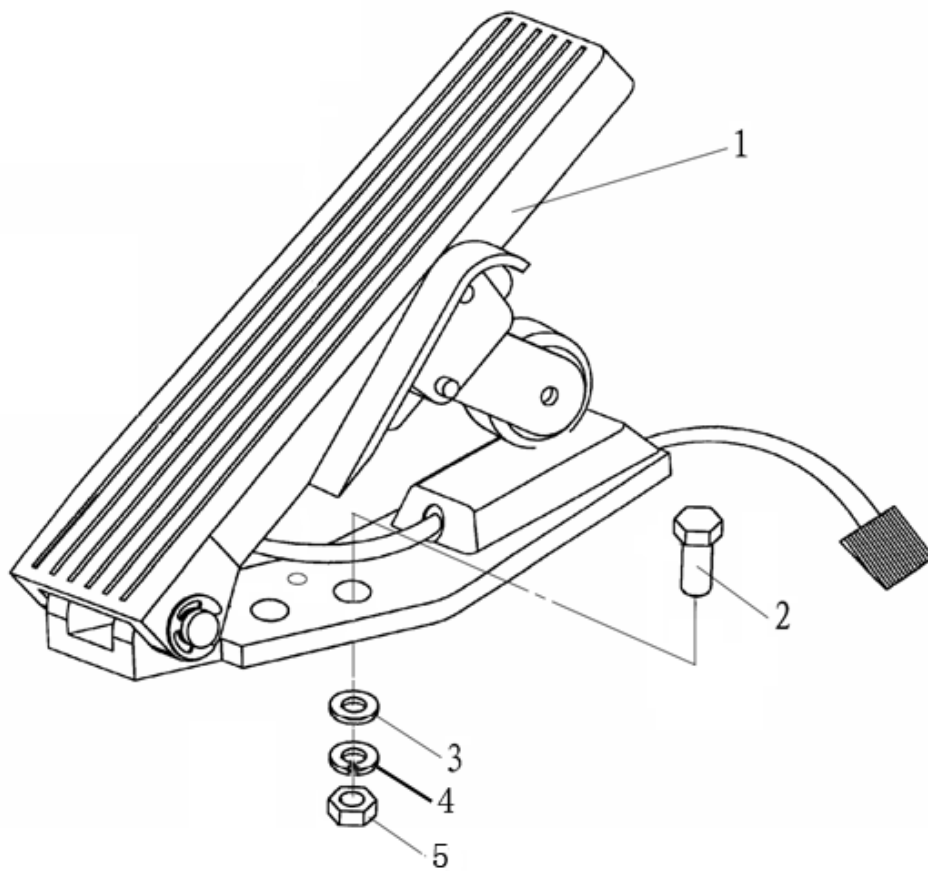


Figure 20

Figure 20

Accelerator And Installation

No.	SN	Name	QTY	Remarks
1	3022800001	Accelerator	1	
2	0000023232	Bolt	2	
3	0000025051	Washer	2	
4	0000025046	Spring Washer	2	
5	0000024026	Nut	2	

NOBLIFT 诺力

Oil Tank

FE4D40-50

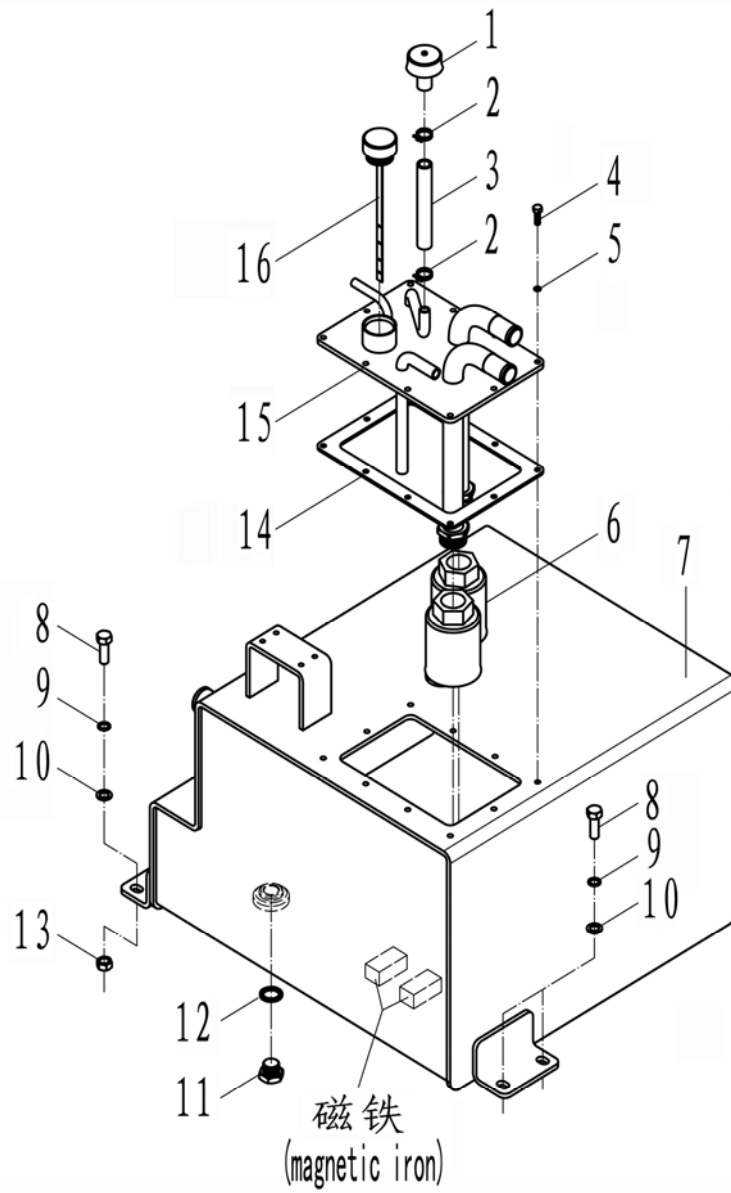


Figure 21

Figure 21

Oil Tank

No.	SN	Name	QTY	Remarks
1	3017500001	Breathing Apparatus	1	
2	0000037008	Double Wire Clamp	2	
3	3047517001	Hose	1	
4	0000023176	Bolt	10	
5	0090000645	Washer	10	
6	3067500002	Double wire clamp	2	
7	9000006862	Oil Tank	1	
8	0000023263	Bolt	4	
9	0000025041	Spring Washer	4	
10	0000025047	Washer	4	
11	3047502001	Drain Plug	1	
12	0000022054	Seal Washer	1	
13	0000024018	Nut	2	
14	9000006861	Gasket	1	
15	9000006869	Oil Tank Cap Assembly	1	
16	3047500001	Regrease Caps	1	

Lifting Motor And Installation

FE4D40-50

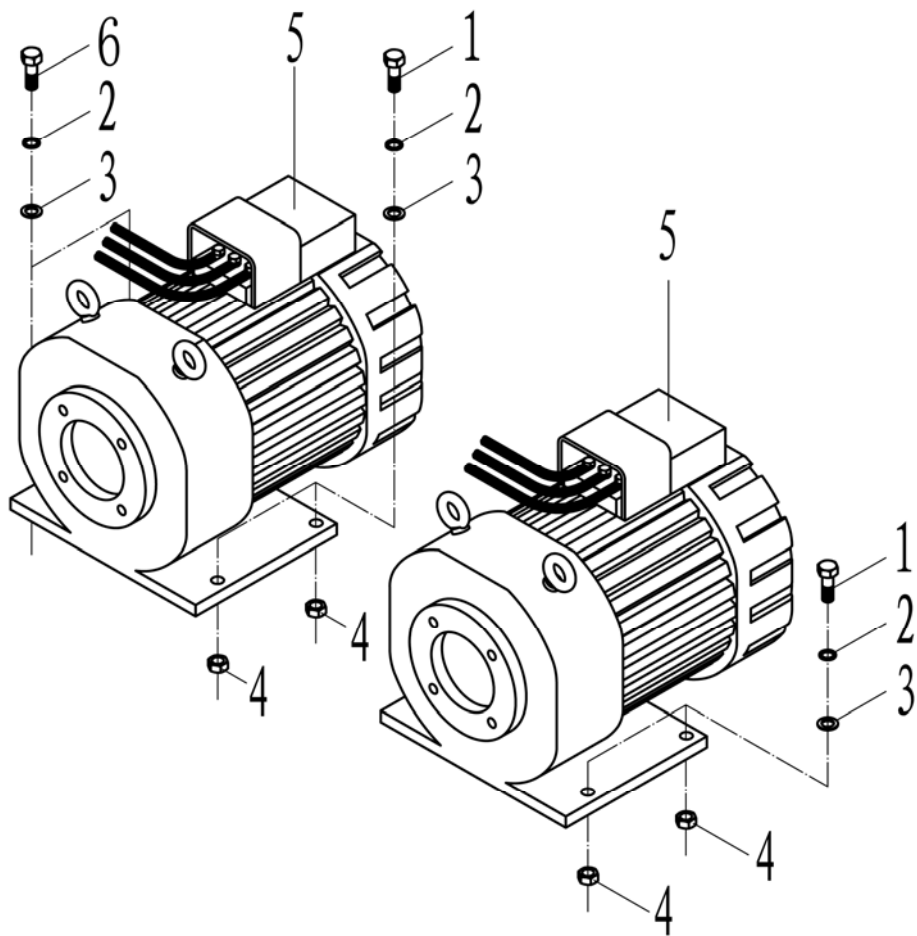


Figure 22

Figure 22

Lifting Motor And Installation

No.	SN	Name	QTY	Remarks
1	0000023224	Bolt	6	
2	0000025041	Spring Washer	8	
3	0000025047	Washer	8	
4	0000024018	Nut	6	
5	9000006981	Lifting Motor	2	
6	0000023223	Bolt	2	

NOBLIFT 诺力

Lifting Motor

FE4D40-50

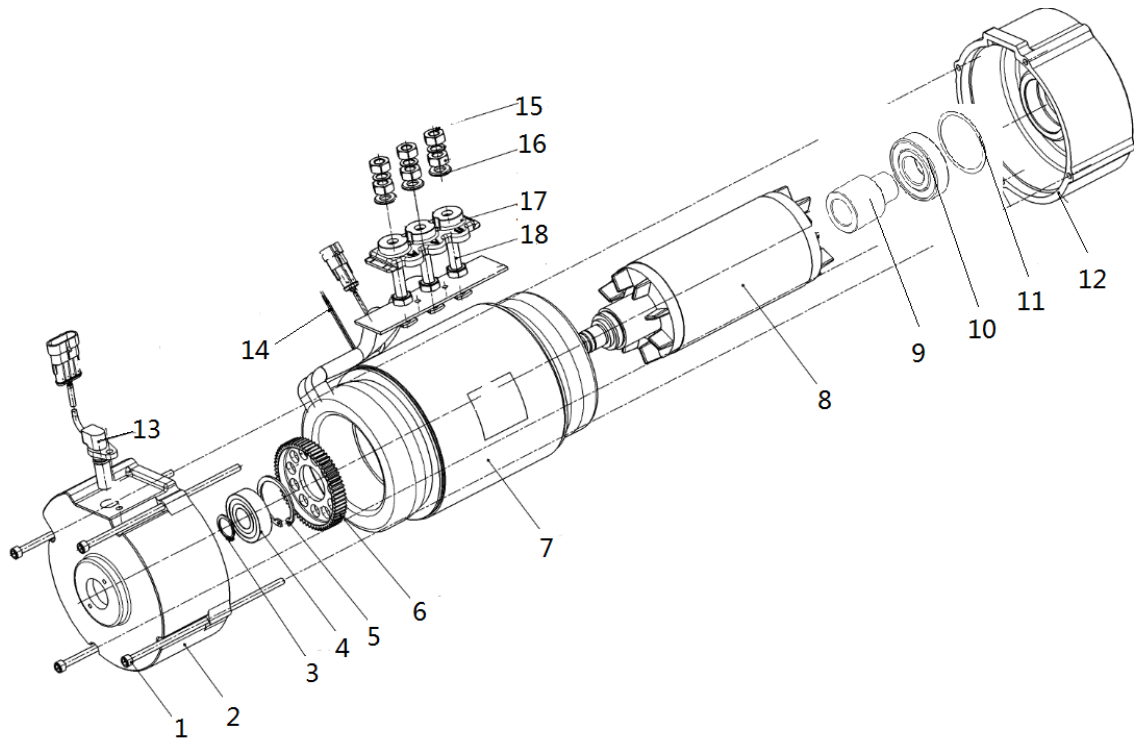


Figure 23

Figure 23

Lifting Motor

No.	SN	Name	QTY	Remarks
1	9000011476	Connecting screw rod	4	
2	9000011486	A-flange	1	
3	9000011372	Waveform ejection plate	1	
4	0090000675	Bearing	1	
5	9000011389	Waveform ejection plate	1	
6	9000011478	Sensor gear wheel plate	1	
7	9000011487	Stator	1	
8	9000011488	Rotor	1	
9	0090000674	Bearing	1	
10	9000011389	Waveform ejection plate	1	
11	0090000676	Skeleton oil seal	2	
12	9000011489	B-flange	1	
13	9000011482	Speed sensor	1	
14	9000011483	Temperature sensor	1	
15	0090000240	Bolt	3	
16	0000025046	Spring washer	3	
17	9000011484	Terminal board	3	
18	9000011485	Connect the column	3	

Valve Control Linkage(Two-Throw)

FE4D40-50

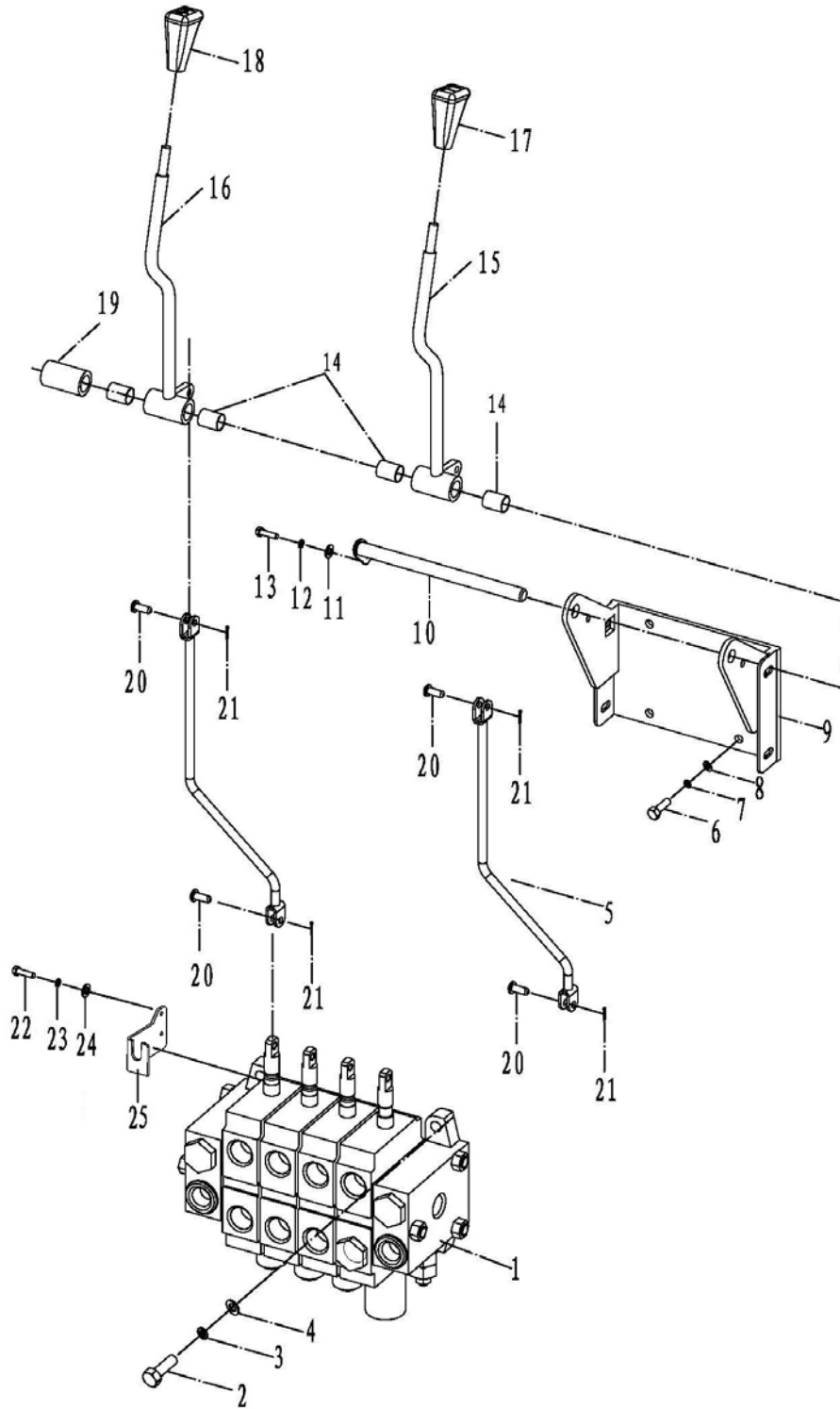


Figure 24

Figure 24 Valve Control Linkage(Two-Throw)

No.	SN	Name	QTY	Remarks
1	9000007131	Multitandem Valve(Two-Throw)	1	
2	0000023227	Bolt	3	
3	0000025042	Spring Washer	3	
4	0000025048	Washer	3	
5	9000007128	Connecting Rod Assembly	2	
6	0000023231	Bolt	4	
7	0000025046	Spring Washer	4	
8	0000025051	Washer	4	
9	9000007122	Lever Mounting Bracket	1	
10	9000007120	Shaft	1	
11	0000025050	Washer	1	
12	0000025045	Spring Washer	1	
13	0000023183	Bolt	1	
14	3046400007	Bearing	4	
15	9000007113	Lifting Lever Assembly	1	
16	9000007117	Tilt Lever Assembly	1	
17	3007403003	Lifting Handle The Ball	1	
18	3007403006	Tilt Handle The Ball	1	
19	9000007119	Shaft Sleeve	1	
20	0090000165	Pin	4	
21	0000028104	Cotter	4	
22	0000023056	Screw	2	
23	0000025038	Spring Washer	2	
24	0000025037	Washer	2	
25	9000007127	Micro switch transition support	2	

Valve Control Linkage(Three-Throw)

FE4D40-50

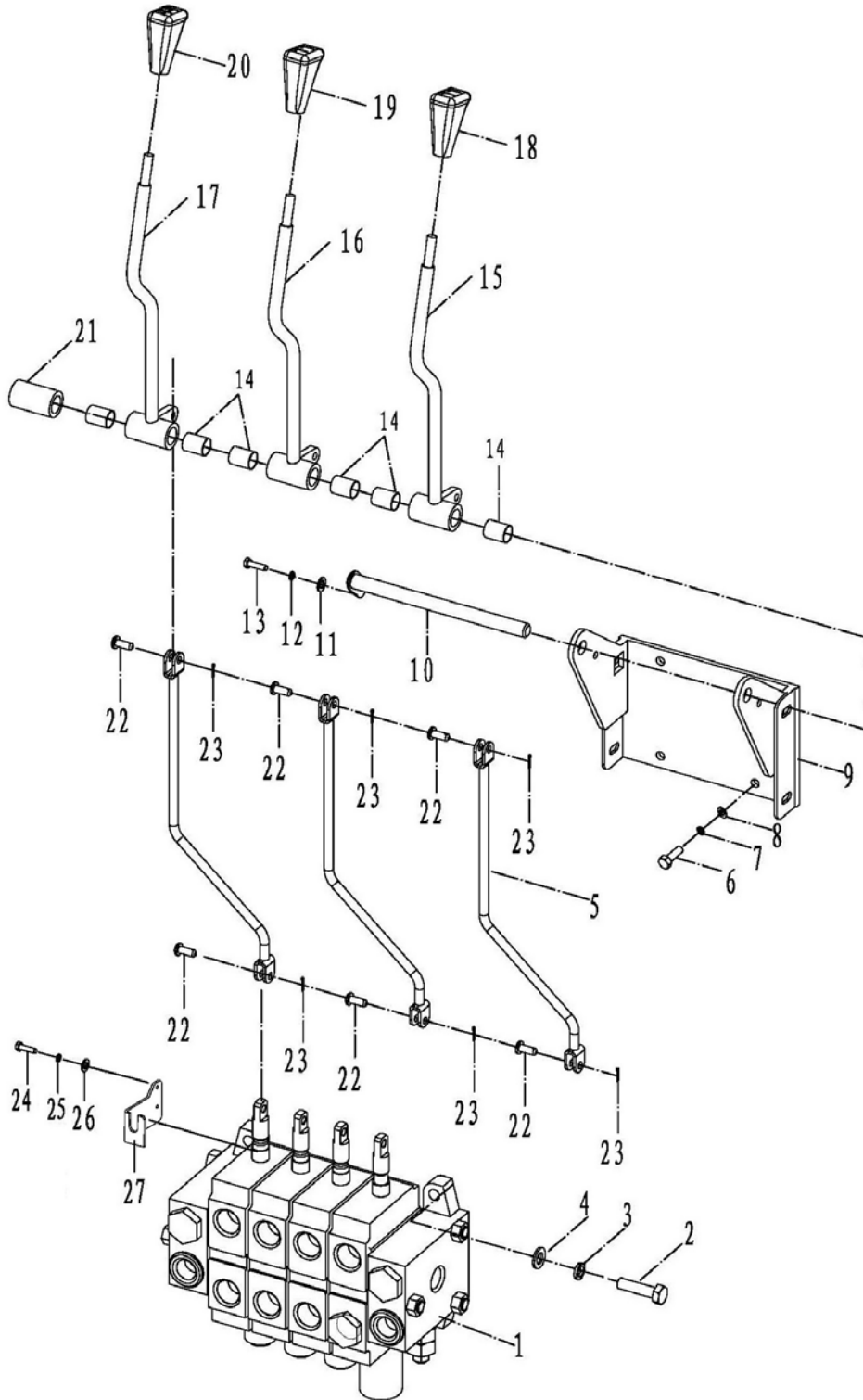


Figure 25

Figure 25 Valve Control Linkage(Three-Throw)

No.	SN	Name	QTY	Remarks
1	9000007173	Multitandem Valve(Three-Throw)	1	
2	0000023227	Bolt	3	
3	0000025042	Spring Washer	3	
4	0000025048	Washer	3	
5	9000007128	Connecting Rod Assembly	3	
6	0000023231	Bolt	4	
7	0000025046	Spring Washer	4	
8	0000025051	Washer	4	
9	9000007122	Lever Mounting Bracket	1	
10	9000007120	Shaft	1	
11	0000025050	Washer	1	
12	0000025045	Spring Washer	1	
13	0000023183	Bolt	1	
14	3046400007	Bearing	6	
15	9000007113	Lifting Lever Assembly	1	
16	9000007117	Tilt Lever Assembly	1	
17	9000007135	Fittings Lever Assembly I	1	
18	3007403003	Lifting HandleThe Ball	1	
19	3007403006	Tilt HandleThe Ball	1	
20	3007403004	Fittings Handle The Ball I	1	
21	9000007119	Shaft Sleeve	1	
22	0090000165	Pin	6	
23	0000028104	Cotter	6	
24	0000023056	Screw	3	
25	0000025038	Spring Washer	3	
26	0000025037	Washer	3	
27	9000007127	Micro switch transition support	3	

Valve Control Linkage(Four-Throw)

FE4D40-50

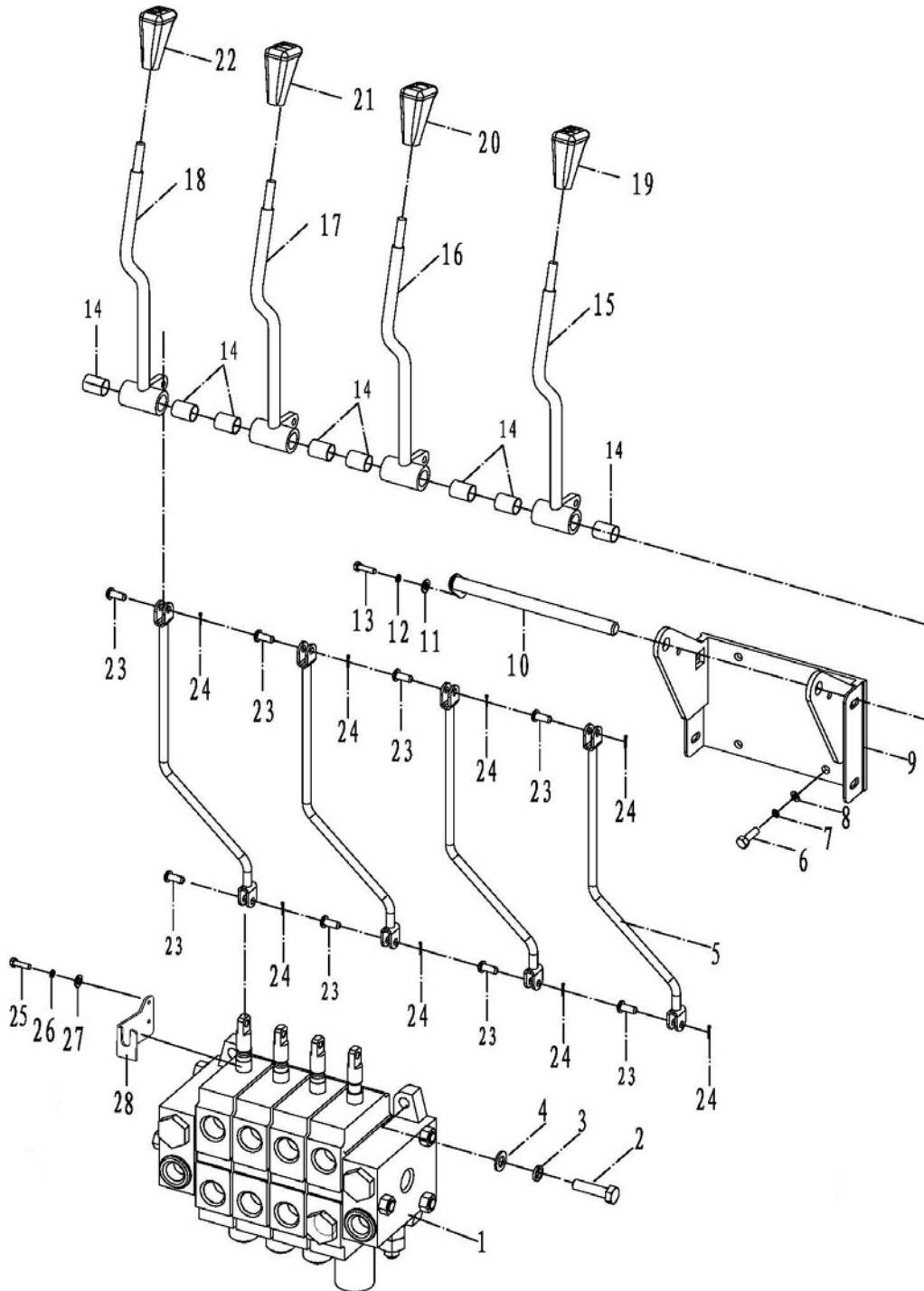


Figure 26

Figure 26 Valve Control Linkage(Four-Throw)

No.	SN	Name	QTY	Remarks
1	9000007141	Multitandem Valve(Four-Throw)	1	
2	0000023227	Bolt	3	
3	0000025042	Spring Washer	3	
4	0000025048	Washer	3	
5	9000007128	Connecting Rod Assembly	4	
6	0000023231	Bolt	4	
7	0000025046	Spring Washer	4	
8	0000025051	Washer	4	
9	9000007122	Lever Mounting Bracket	1	
10	9000007120	Shaft	1	
11	0000025050	Washer	1	
12	0000025045	Spring Washer	1	
13	0000023183	Bolt	1	
14	3046400007	Bearing	8	
15	9000007113	Lifting Lever Assembly	1	
16	9000007117	Tilt Lever Assembly	1	
17	9000007135	Fittings Lever Assembly I	1	
18	9000007139	Fittings Lever Assembly II	1	
19	3007403003	Lifting HandleThe Ball	1	
20	3007403006	Tilt HandleThe Ball	1	
21	3007403004	Fittings Handle The Ball I	1	
22	3007403005	Fittings Handle The Ball II	1	
23	0090000165	Pin	8	
24	0000028104	Cotter	8	
25	0000023056	Screw	4	
26	0000025038	Spring Washer	4	
27	0000025037	Washer	4	
28	9000007127	Micro switch transition support	4	

Hydraulic System

FE4D40-50

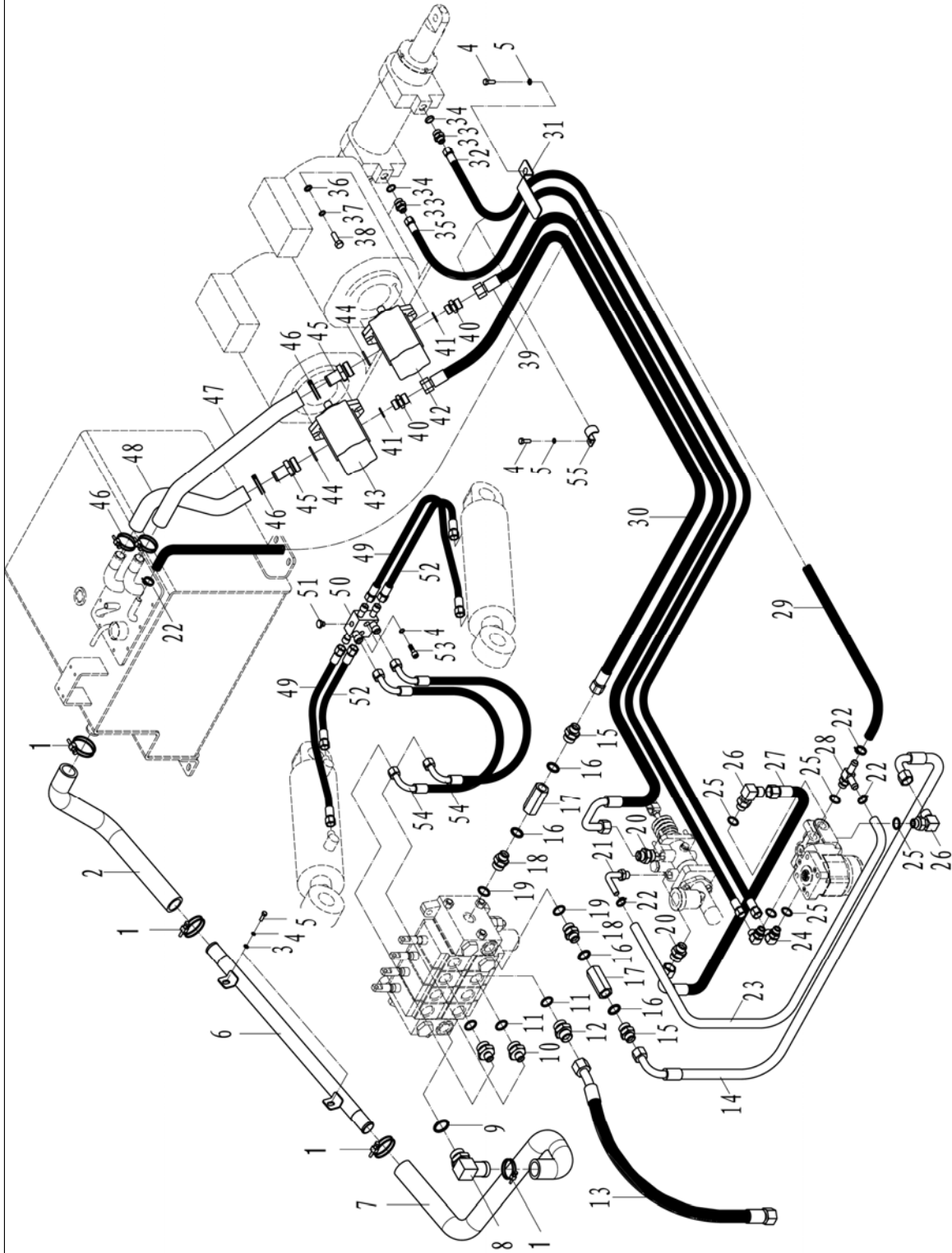


Figure 27

Figure 27

Hydraulic System

No.	SN	Name	QTY	Remarks
1	0000037003	Double Wire Type Hoop	4	
2	9000006884	Oil Hose II	1	
3	0000025051	Washer	2	
4	0000025046	Spring Washer	6	
5	0000023230	Bolt	6	
6	9000006881	Steel Tube	1	
7	9000006880	Oil Hose I	1	
8	9000006909	Angle Coupling	1	
9	0000022098	O-Ring	1	
10	9000006905	Pipe Joint	2	4(Three),6(Four)
11	0090000267	O-Ring	2	4(Three),6(Four)
12	9000006906	Pipe Joint	1	
13	9000006878	Lifting Hose Assembly	1	
14	9000006877	Rubber Tube Assembly	1	
15	3007602006	Pipe Joint	2	
16	0000022052	Combined Sealing Washer	4	
17	9000006907	One-way Valve	2	
18	9000006908	Pipe Joint	1	
19	0090000268	O-Ring	1	
20	9000006913	Brake Transition Joint	2	
21	9000006912	Brake Oil Return Angle Coupling	1	
22	0000037005	Double Wire Type Hoop	4	
23	9000006903	Oil Return Pipe	1	
24	3007600003	Angle Coupling	2	
25	0000022043	O-Ring	4	
26	3007602004	Multiple Valve Outlet Joint I	2	
27	3047617003	Multiple Valve Outlet Joint	1	
28	9000006910	Tee Oil Return Joint	1	
29	9000006894	Oil Return Pipe	1	
30	9000006902	Pump - multiple Valve Hose	1	
31	9000006893	Pipe Clamp	2	
32	9000006889	Steering Hose I	1	

Hydraulic System

FE4D40-50

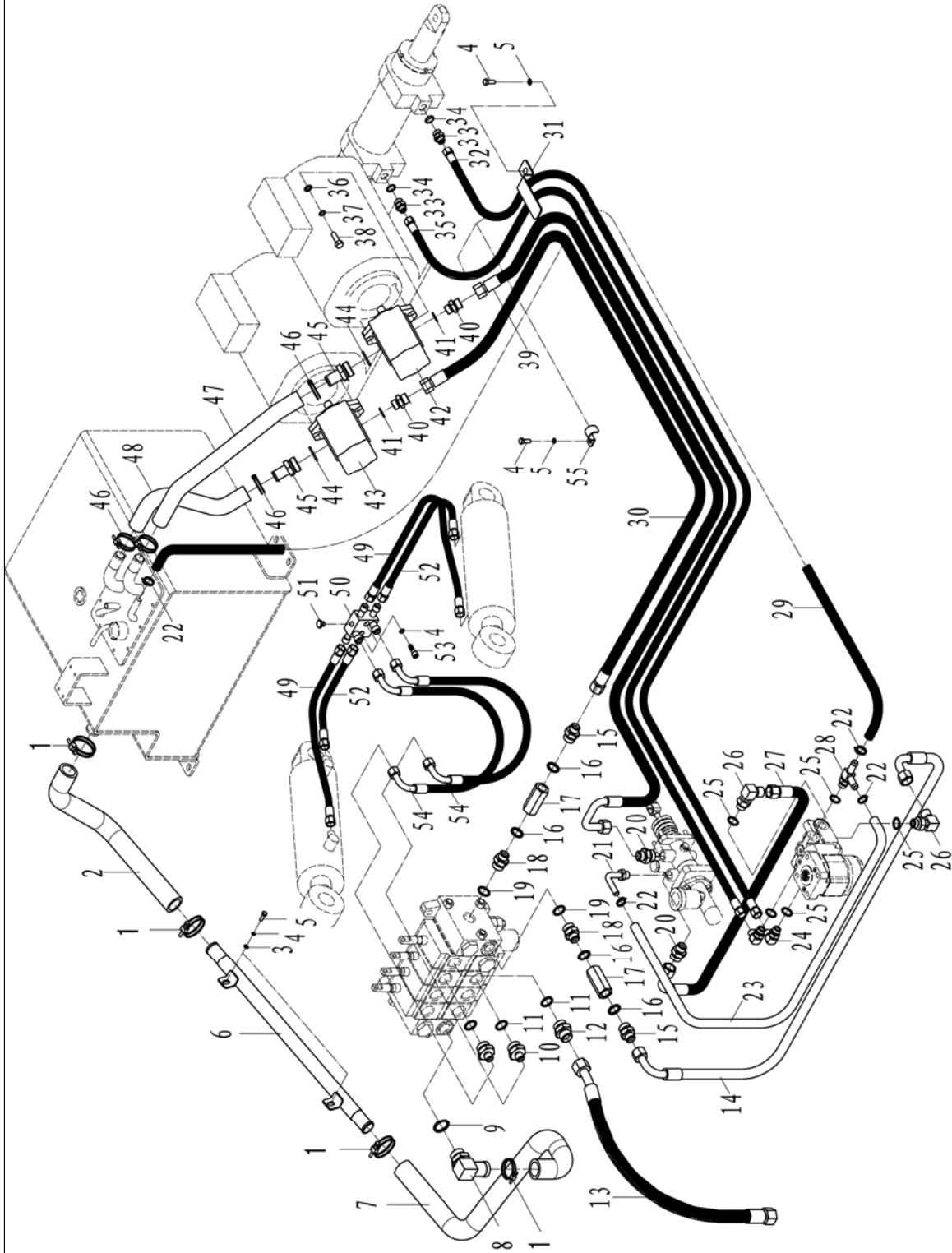


Figure 27

Figure 27

Hydraulic System

No.	SN	Name	QTY	Remarks
33	9000006887	Steering Cylinder Joint	2	
34	0000022080	O-Ring	2	
35	9000006886	Steering Hose II	1	
36	0000025047	Washer	4	
37	0000025041	Spring Washer	4	
38	0000023223	Bolt	4	
39	9000006904	Pump - Brake Hose Assembly	1	
40	9000006915	Oil Pump Outlet Connection	1	
41	0000022043	O-Ring	1	
42	9000006892	Gear Pump	1	
43	9000006890	Gear Pump	1	
44	0000022098	O-Ring	2	
45	9000006914	Oil Pump Oil Absorption Joint	2	
46	0000037002	Double Wire Type Hoop	4	
47	9000006891	Oil Suction Hose II	1	
48	9000006888	Oil Suction Hose I	1	
49	9000006901	Inclined Hose III	2	
50	9000006895	Six Through Joint	1	
51	9000006899	Choke Plug	1	
52	9000006900	Inclined Hose II	2	
53	0000023817	Bolt	2	
54	9000006879	Inclined Hose I	2	
55	9000006885	Single Pipe Clamp	2	

Lifting Pipeline System of Main Frame (Normal Mast)

FE4D40-50

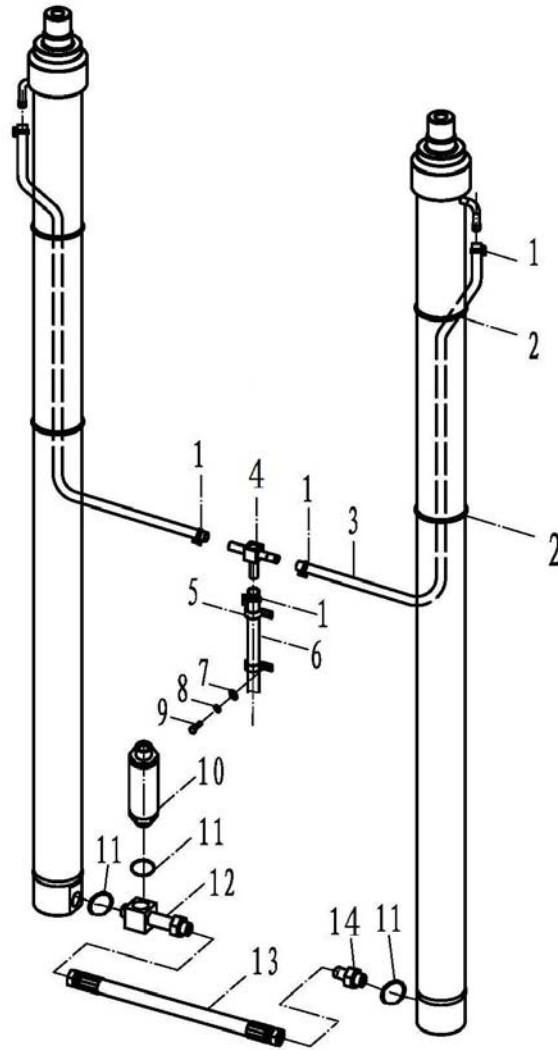


Figure 28

Figure 28 Lifting Pipeline System of Main Frame (Normal Mast)

No.	SN	Name	QTY	Remarks
1	0000037008	Double Wire Clamp	5	
2	9000007085	Strapping Tape	6	
3	9000007084	Oil Return Pipe I	2	
4	3068002012	Three-way Connection	1	
5	3006102001	Pipe Clamp	2	
6	9000007092	Oil Return Pipe II	1	
7	0000025050	Washer	2	
8	0000025045	Spring Washer	2	
9	0000023183	Bolt	2	
10	9000007086	Speed Limit Valve	1	
11	0090000268	O-Ring	3	
12	9000007087	Speed Limit Valve Tee	1	
13	9000007091	Cylinder Connecting Pipe	1	
14	9000011284	Straight coupling	1	

Side Shifter & Pipeline Installation System (Normal Mast)

FE4D40-50

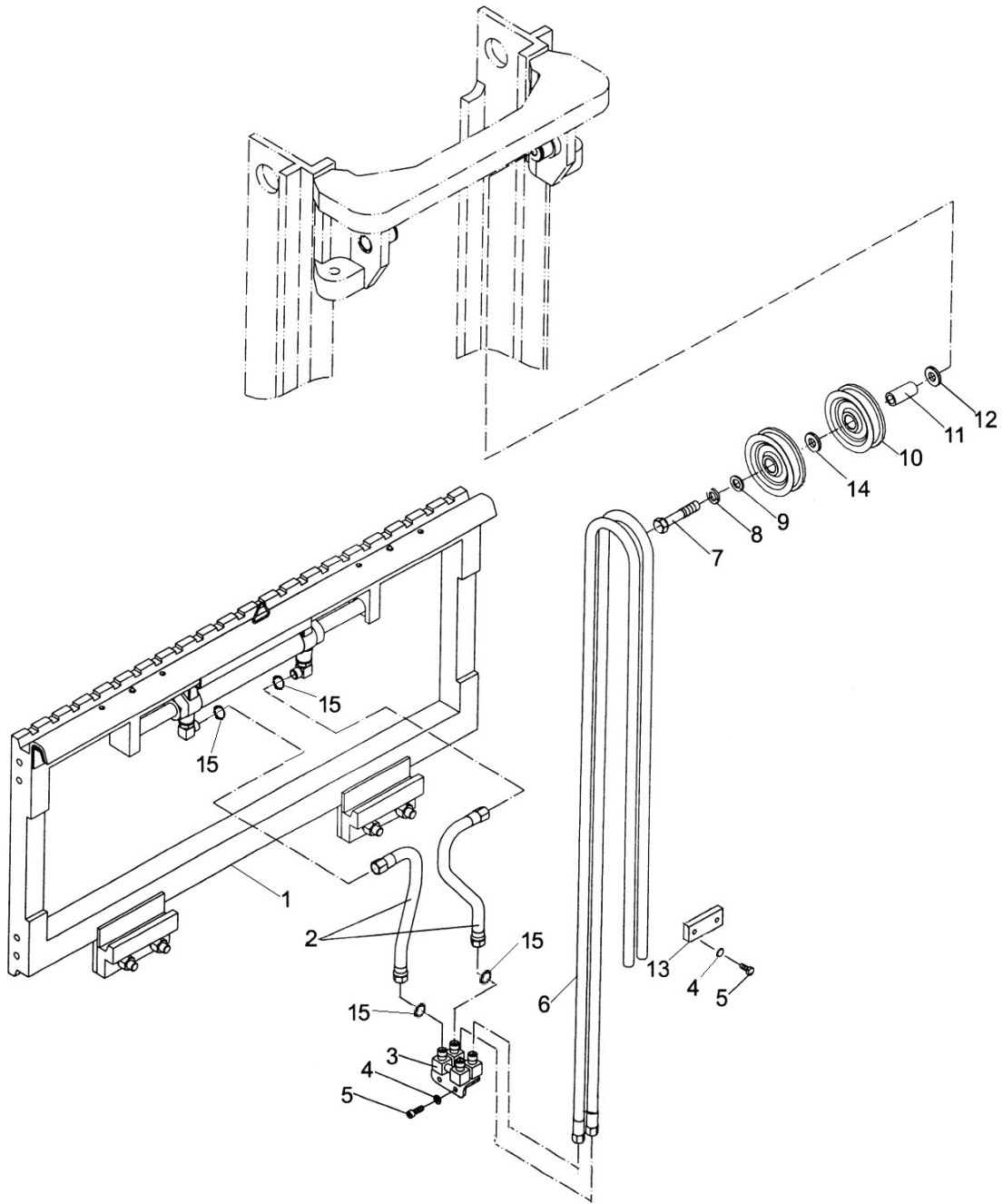


Figure 29

Figure 29 Side Shifter & Pipeline Installation System (Normal Mast)

No.	SN	Name	QTY	Remarks
1	9000007106	Side shifter assembly	1	
2	3068017016	Front the short tube	2	
3	3008001032	With four holes of oil	1	
4	0000025046	Spring washer	4	
5	0000023147	Screw	4	
6	9000007105	Hose of side shifter	2	H=3000mm
	9000010989			H=2900mm
	9000010990			H=3300mm
	9000010991			H=3500mm
	9000010992			H=3600mm
	9000010993			H=3700mm
	9000010994			H=4000mm
	9000010995			H=4500mm
	9000010996			H=4700mm
	9000010997			H=5000mm
9000010998	H=6000mm			
7	0000023333	Bolt	1	
8	0000025055	Spring washer	1	
9	0000025069	Flat washer	1	
10	9000007104	Pulley	2	
11	3068002016	Shaft sleeve	1	
12	3068002018	Flat washer	1	
13	3068002020	Clamp holder	1	
14	3068002015	Sleeve	1	
15	0000022196	O ring	4	

Fork

FE4D40-50

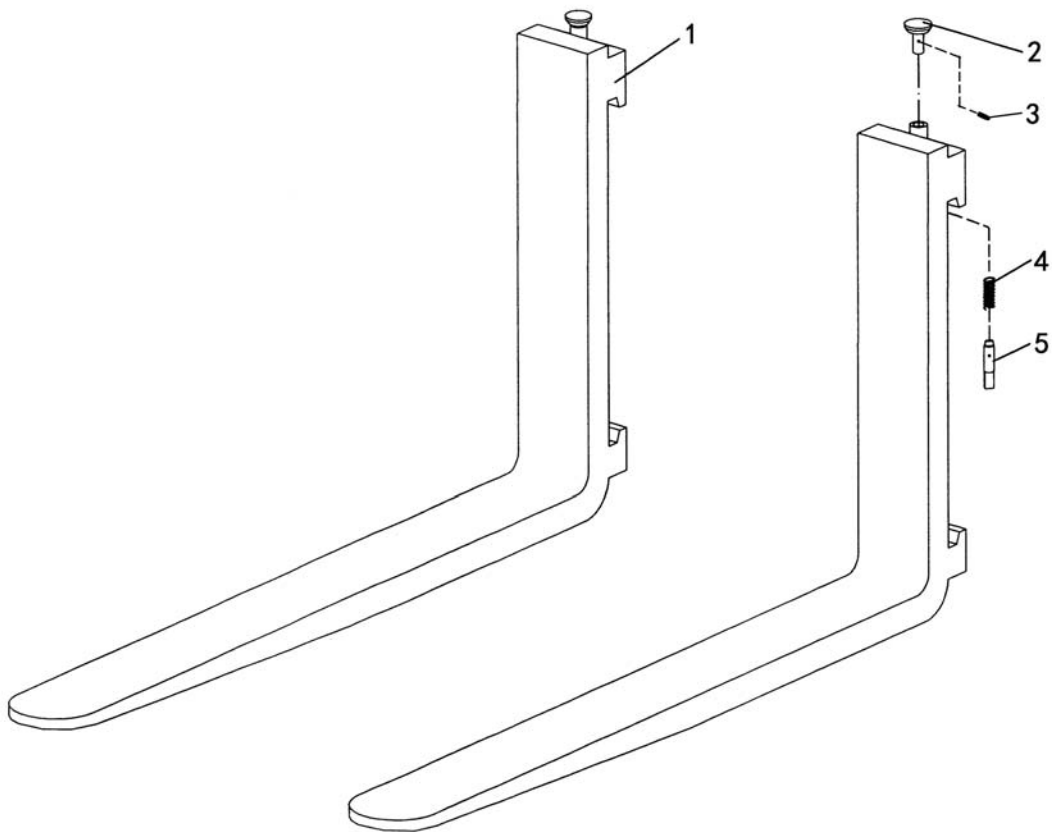


Figure 30

Figure 30

Fork

No.	SN	Name	QTY	Remarks
A	9000007082	Fork	2	L=1070mm
	9000011233			L=1150mm
	9000011234			L=1220mm
	9000011235			L=1370mm
	9000011236			L=1520mm
1	9000011237	Fork body	2	
2	9000011238	Handle	2	
3	0090000598	Spring cylindrical pin	2	
4	9000011239	Spring	2	
5	9000011240	Pin	2	

NOBLIFT 诺力

Fork Bracket (Normal Mast)

FE4D40-50

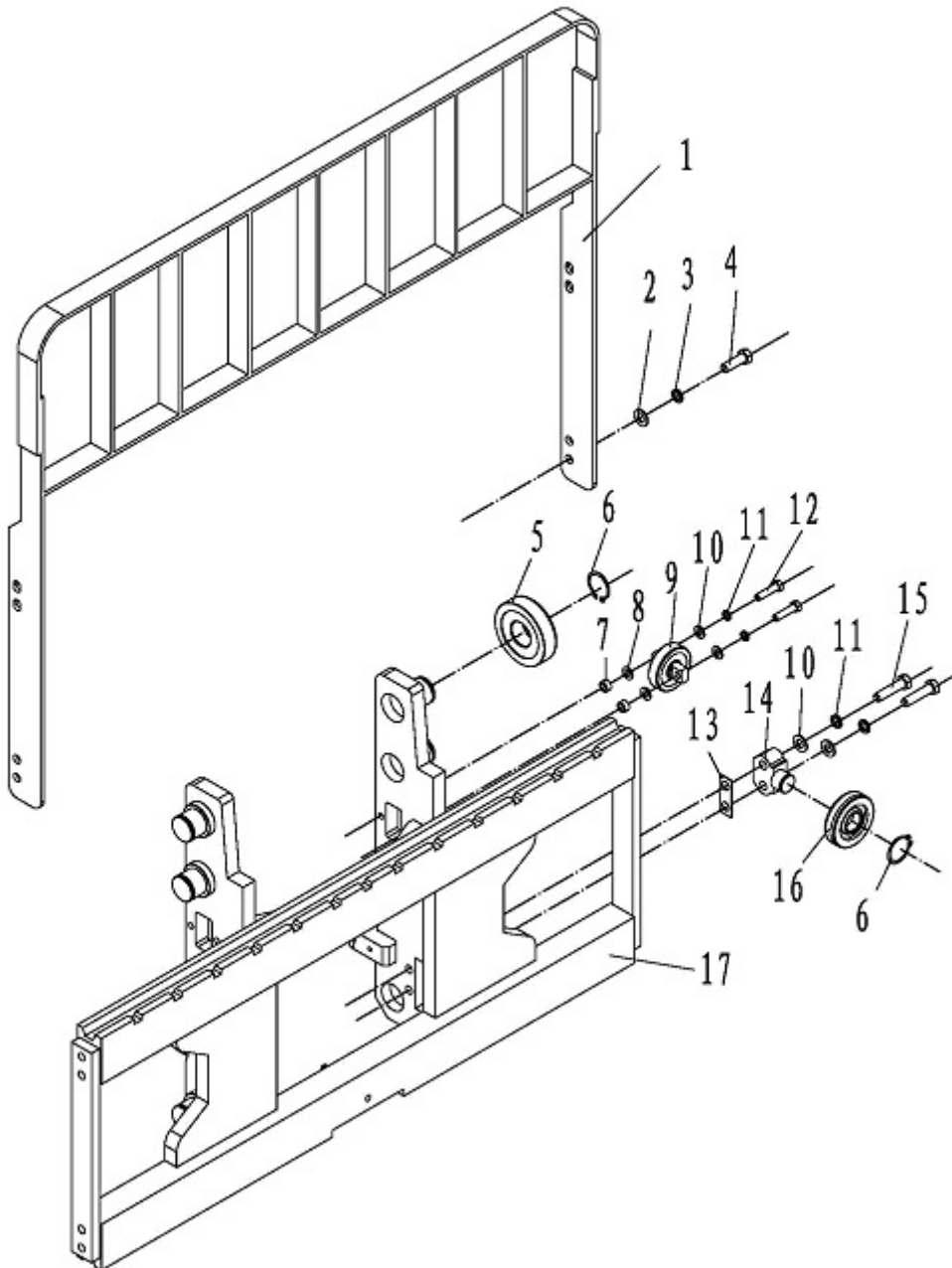


Figure 31

Figure 31

Fork Bracket (Normal Mast)

No.	SN	Name	QTY	Remarks
1	9000007077	Load-backrest	1	
2	0000025069	Washer	12	
3	0000025055	Spring Washer	12	
4	0090000379	Bolt	8	
5	9000007096	Vertical Roller	6	
6	0000026043	Circlip For Shaft	8	
7	9000007027	Adjusting Washer II	2-4	
8	9000007097	Adjusting Washer III	4	
9	9000007098	Side Rolling Wheel	2	
10	0000025048	Washer	12	
11	0000025042	Spring Washer	12	
12	0000023734	Bolt	8	
13	9000007095	Adjustable Pad	2-4	
14	9000007094	Side Roller Shaft	2	
15	0000023281	Bolt	4	
16	9000007093	Side Rolling Wheel	2	
17	9000007068	Fork Bracket	1	

Mast (Normal Mast)

FE4D40-50

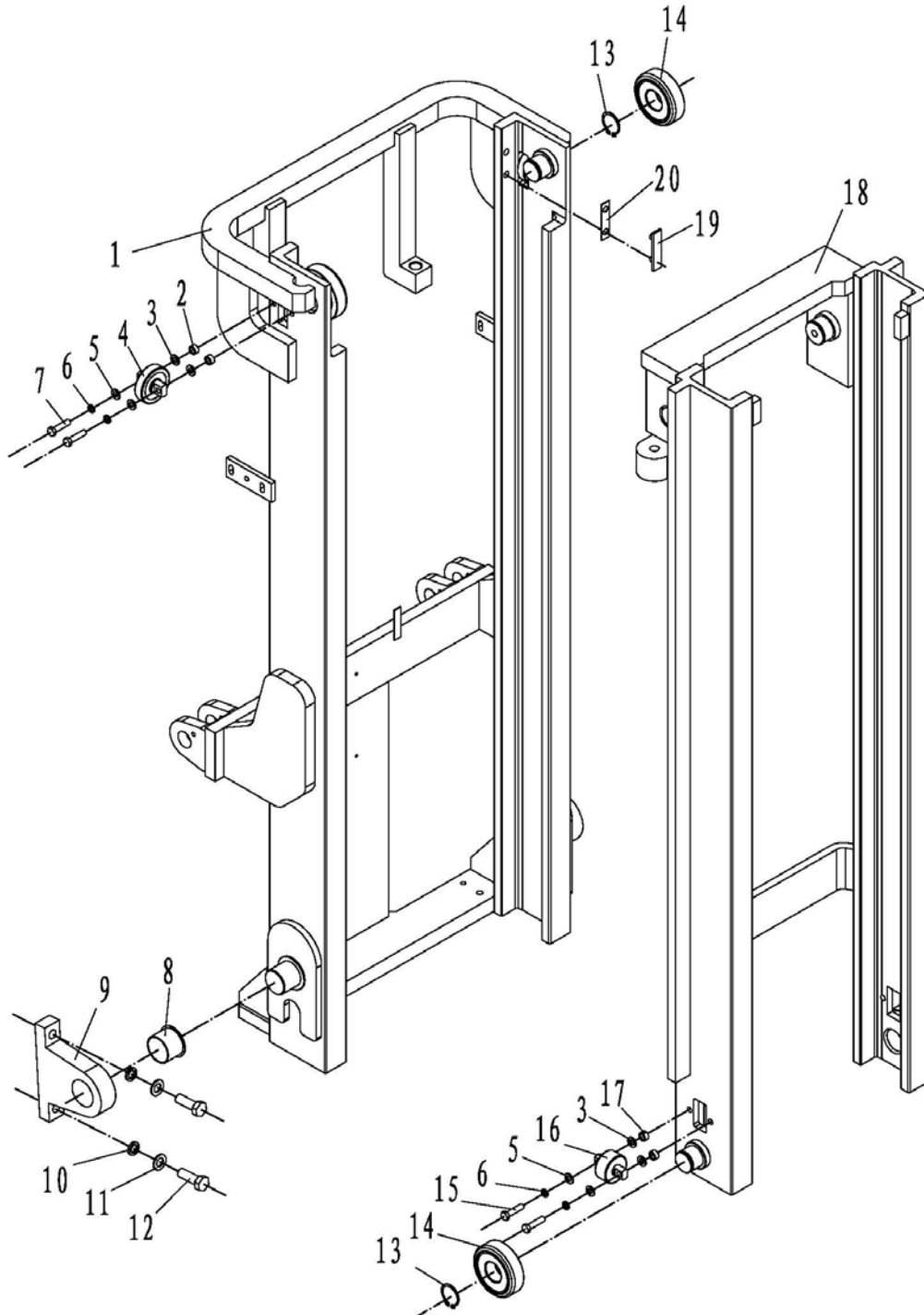


Figure 32

Figure 32

Mast (Normal Mast)

No.	SN	Name	QTY	Remarks
1	900007029	Outer Mast	1	H=3000mm
	9000010999			H=2900mm
	9000011000			H=3300mm
	9000011001			H=3500mm
	9000011002			H=3600mm
	9000011003			H=3700mm
	9000011004			H=4000mm
	9000011005			H=4500mm
	9000011006			H=4700mm
	9000011007			H=5000mm
9000011008	H=6000mm			
2	900007026	Adjusting Washer I	4	
3	900007027	Adjusting Washer II	2-4	
4	900007025	Side Rolling Wheel	2	
5	0000025048	Washer	8	
6	0000025042	Spring Washer	8	
7	0000023190	Bolt	4	
8	900007019	Bearing	2	
9	900007018	Mast Connection Seat	2	
10	0000025067	Washer	4	
11	0000025057	Spring Washer	4	
12	0090000382	Bolt	4	
13	0000026043	Circlip For Shaft	4	
14	900007096	Vertical Roller	4	
15	0000023734	Bolt	4	
16	900007098	Side Rolling Wheel	2	
17	900007097	Adjusting Washer III	4	
18	900007054	Inner Mast	1	H=3000mm
	9000011009			H=2900mm
	9000011010			H=3300mm
	9000011011			H=3500mm
	9000011012			H=3600mm

Mast (Normal Mast)

FE4D40-50

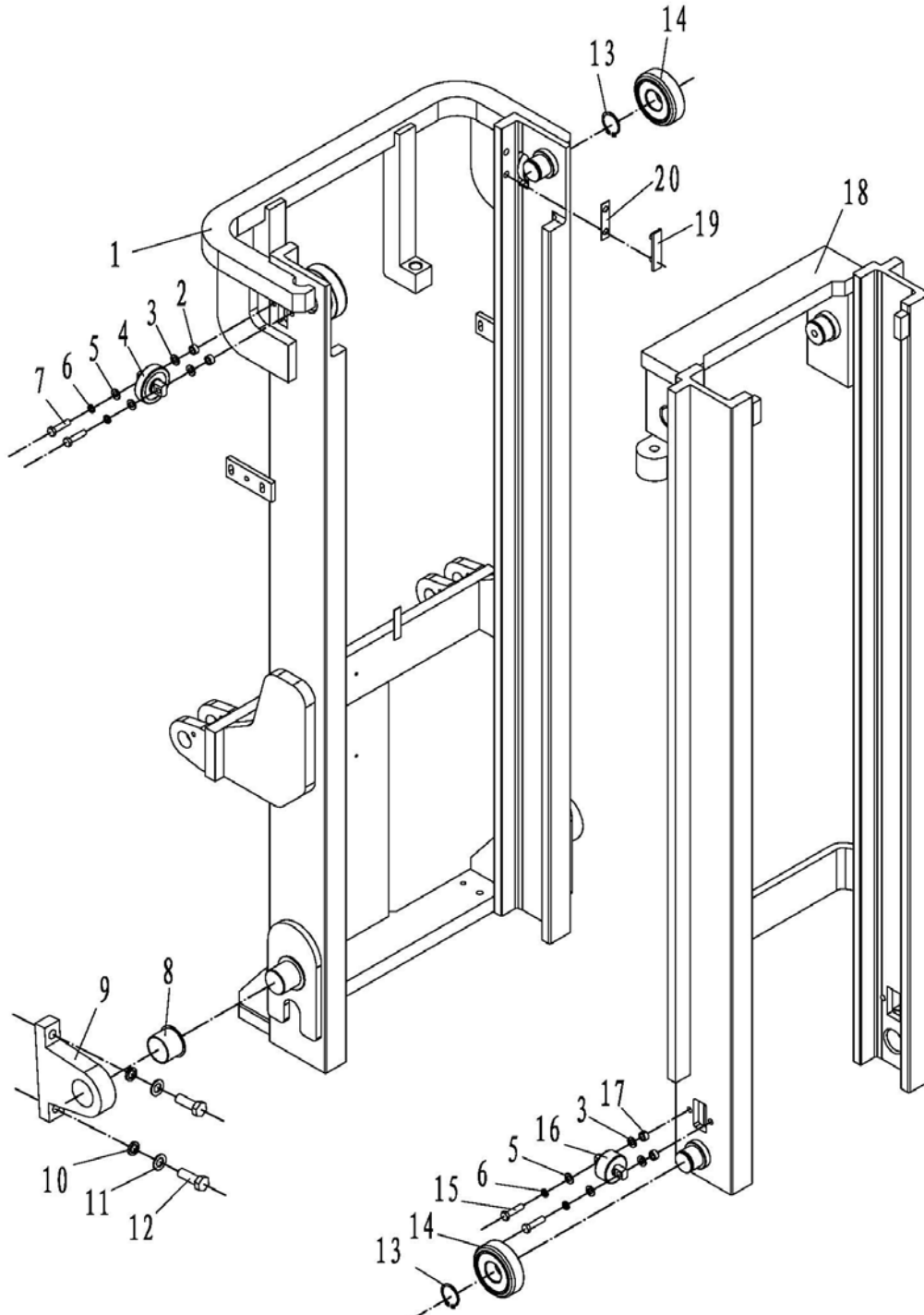


Figure 32

Figure 32

Mast (Normal Mast)

No.	SN	Name	QTY	Remarks
18	9000011013	Inner Mast	1	H=3700mm
	9000011014			H=4000mm
	9000011015			H=4500mm
	9000011016			H=4700mm
	9000011017			H=5000mm
	9000011018			H=6000mm
19	3008019002	Guide Plate	2	
20	3008004002	Guide Adjusting Pad	4-8	

NOBLIFT 诺力

Lift cylinder (Normal Mast)

FE4D40-50

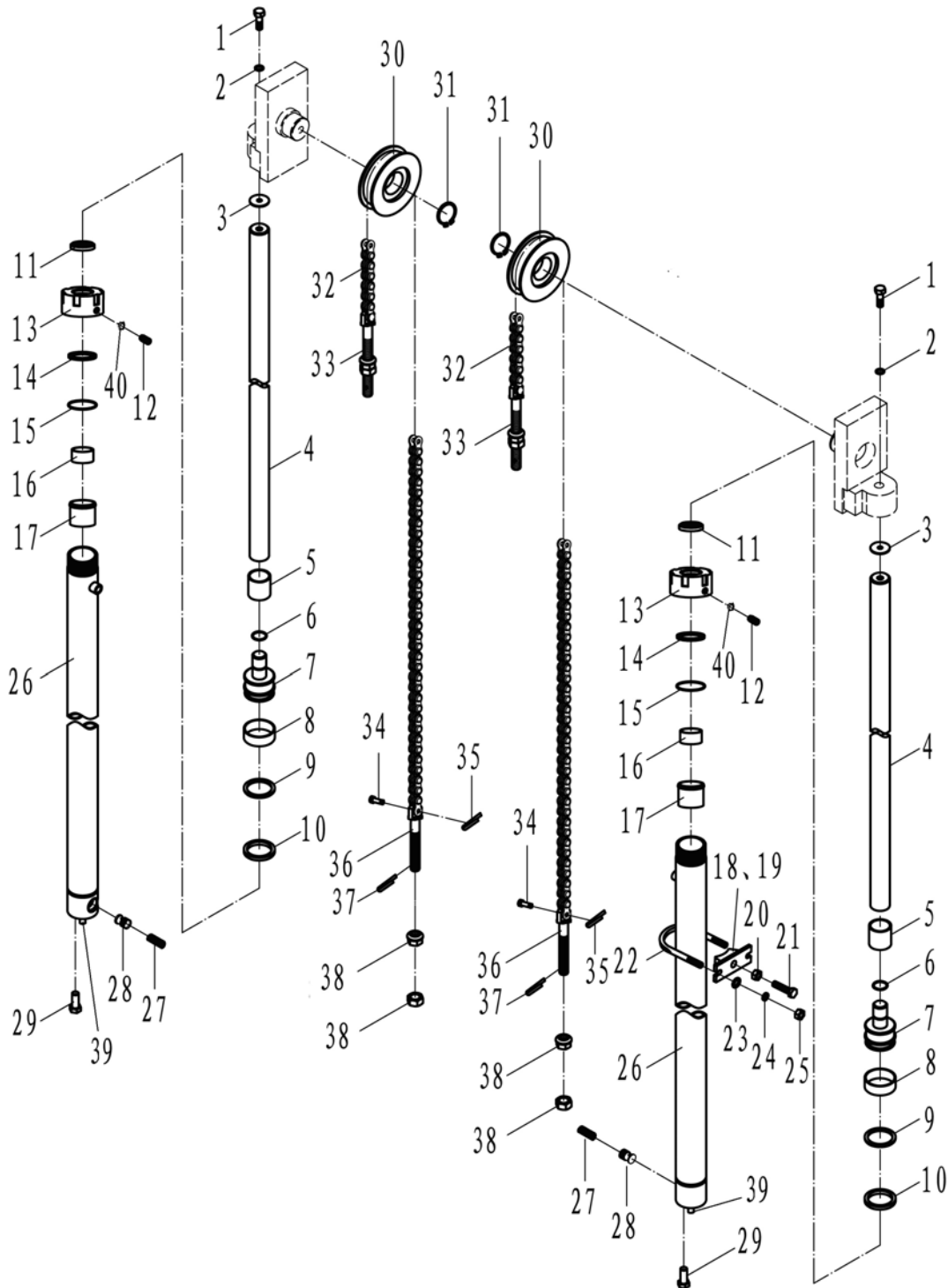


Figure 33

Figure 33

Lift cylinder (Normal Mast)

No.	SN	Name	QTY	Remarks
A	900007021	Lift Cylinder	2	H=3000mm
	900011241			H=2900mm
	900011242			H=3300mm
	900011243			H=3500mm
	900011244			H=3600mm
	900011245			H=3700mm
	900011246			H=4000mm
	900011247			H=4500mm
	900011248			H=4700mm
	900011249			H=5000mm
	900011250			H=6000mm
1	0090000381	Bolt	2	
2	0000025057	Spring Washer	2	
3	900007012	Adjustable Pad	2-4	
4	900011019	Piston Rod	2	H=3000mm
	900011251			H=2900mm
	900011252			H=3300mm
	900011253			H=3500mm
	900011254			H=3600mm
	900011255			H=3700mm
	900011256			H=4000mm
	900011257			H=4500mm
	900011258			H=4700mm
	900011259			H=5000mm
	900011260			H=6000mm
5	900011021	Adjusting Sleeve	2	
6	0090000431	Rings For Shaft	2	
7	900011022	Piston	2	
8	3008019017	Hole With Bearing Ring	2	16783-07006
9	3008019018	Check Ring	2	16783-07007
10	900011023	Hole Sealing	2	

Lift cylinder (Normal Mast)

FE4D40-50

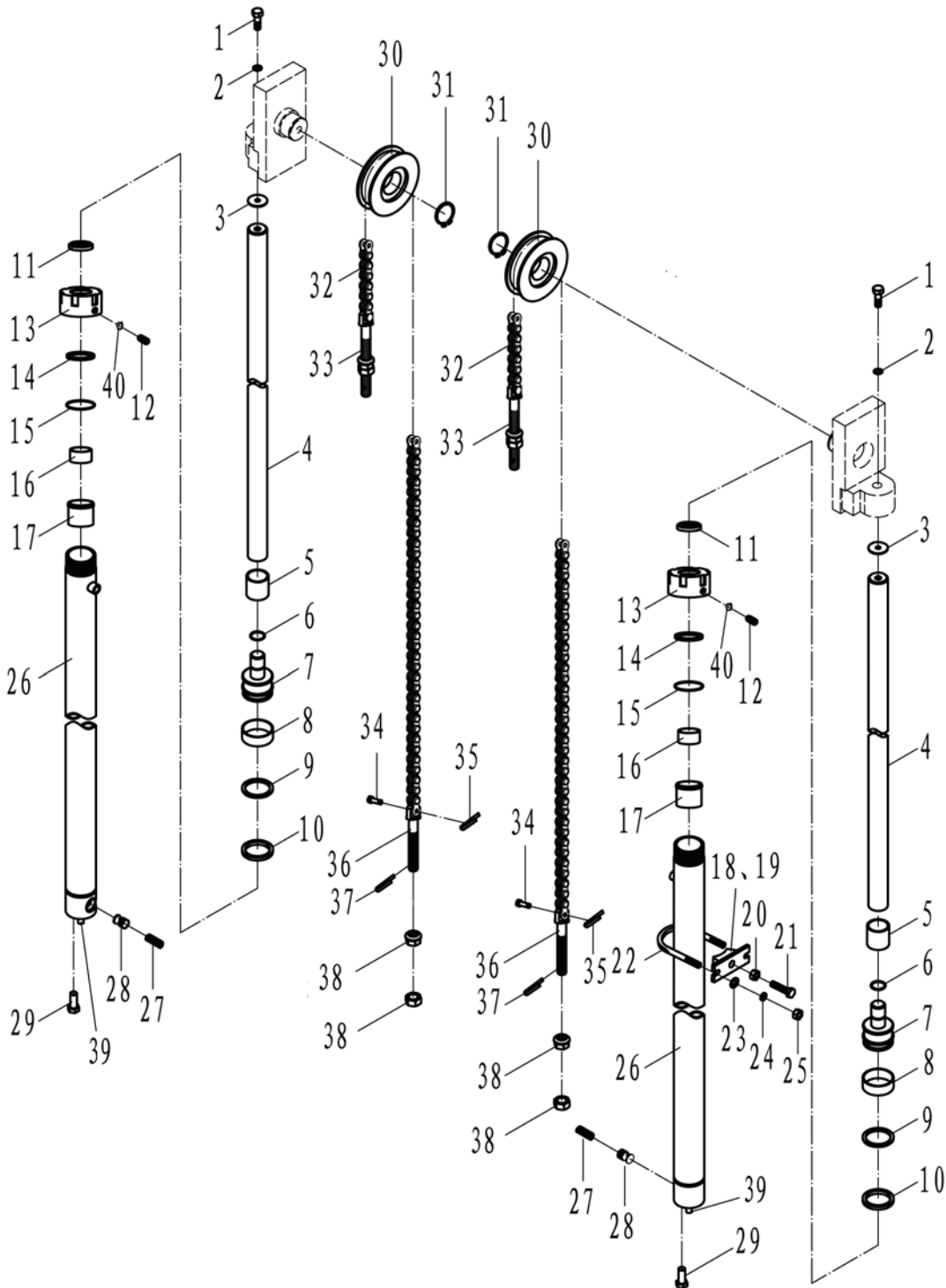


Figure 33

Figure 33

Lift cylinder (Normal Mast)

No.	SN	Name	QTY	Remarks
11	3044322004	Dust Ring	2	30743B-01303
12	0090000664	Screw	2	
13	9000011024	Cylinder Cover	2	
14	9000011025	Shaft Seal	2	
15	0090000663	O-Ring	2	
16	9000011026	Bearing	2	
17	9000011027	Guide Sleeve	2	
18	9000007024	Cylinder Ring Seat	2	
19	9000007023	Rubber Sleeve	2	
20	0000024018	Nut	2	
21	0000023225	Bolt	2	
22	9000007022	Cylinder Retaining Ring	2	
23	0000025047	Washer	4	
24	0000025041	Spring Washer	4	
25	0000024037	Nut	4	
26	9000011020	Cylinder Block	2	H=3000mm
	9000011261			H=2900mm
	9000011262			H=3300mm
	9000011263			H=3500mm
	9000011264			H=3600mm
	9000011265			H=3700mm
	9000011266			H=4000mm
	9000011267			H=4500mm
	9000011268			H=4700mm
	9000011269			H=5000mm
9000011270	H=6000mm			
27	9000011028	Spring	2	
28	9000011029	Spool	2	
29	0090000380	Bolt	2	
30	9000007028	Chain Wheel	2	
31	0000026015	Circlip For Shaft	2	

Lift cylinder (Normal Mast)

FE4D40-50

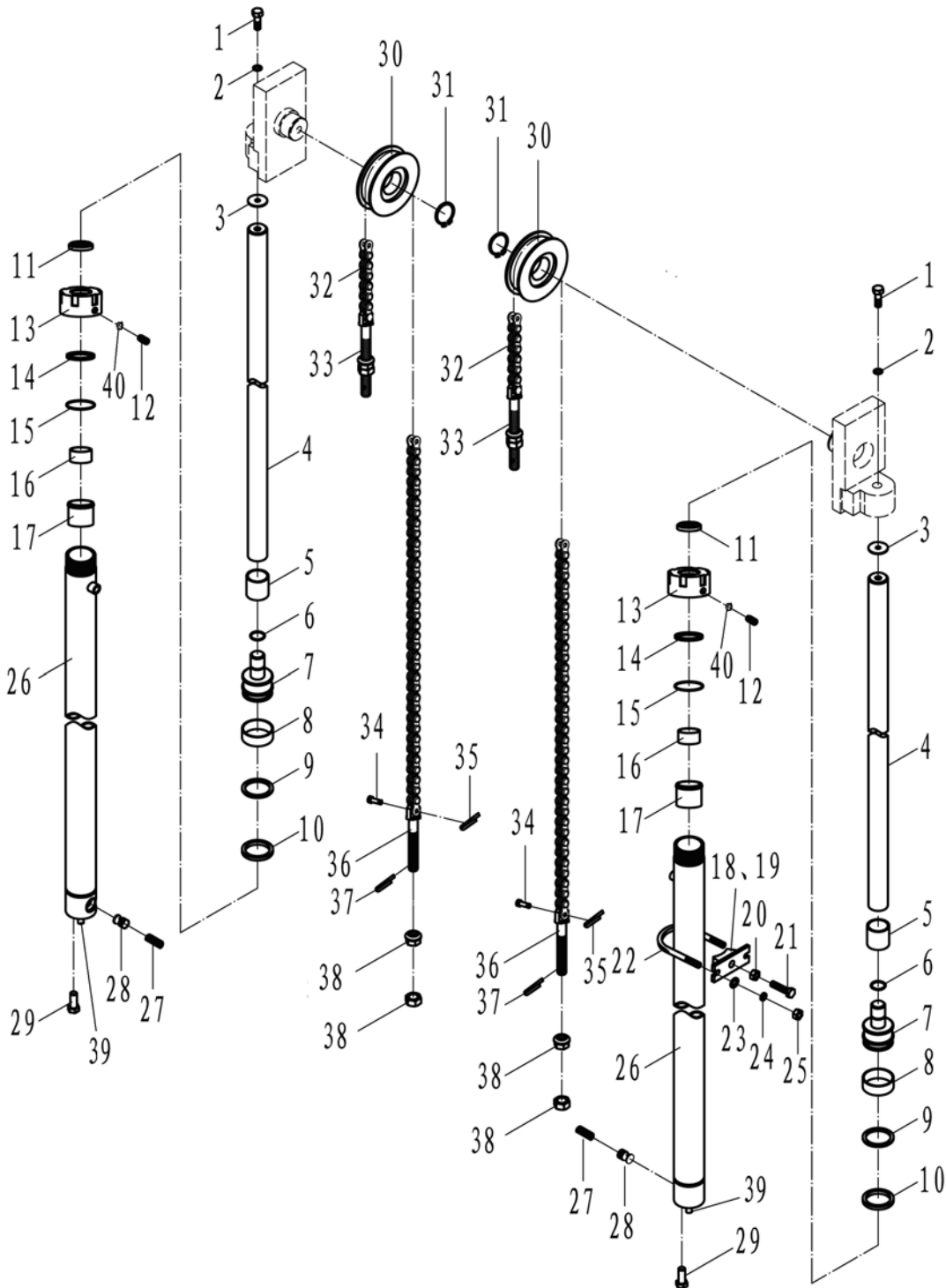


Figure 33

Figure 33

Lift cylinder (Normal Mast)

No.	SN	Name	QTY	Remarks
32	0000029170	Chain	2	H=3000mm
	0090000727			H=2900mm
	0000029173			H=3300mm
	0000029152			H=3500mm
	0000029174			H=3600mm
	0000029153			H=3700mm
	0000029192			H=4000mm
	0000029194			H=4500mm
	0000029158			H=4700mm
	0090000728			H=5000mm
	0000029197			H=6000mm
33	9000007102	Chain Bar (II)	2	
34	9000007101	Pin	4	
35	0000028161	Cotter Pin	4	
36	9000007100	Chain Bar (I)	2	
37	0090000385	Cotter Pin	4	
38	0090000266	Nut	8	
39	0000028096	Cylindrical pin	2	
40	9000011030	Nylon pad	2	

Tilt Cylinder

FE4D40-50

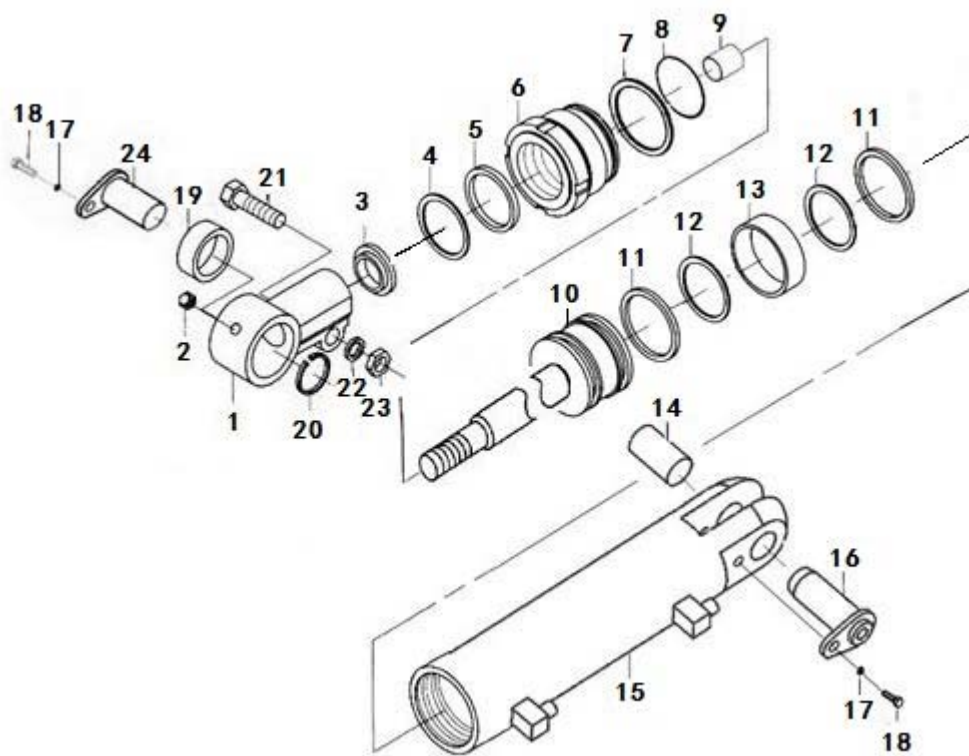


Figure 34

Figure 34

Tilt Cylinder

No.	SN	Name	QTY	Remarks
A	9000007020	Tilt Cylinder	2	$H \leq 4.5m$
	9000011271			$4.5m < H < 5.5m$
	9000011272			$5.5m \leq H \leq 6m$
1	9000011031	Earrings	2	
2	0090000176	Oil Cup	2	
3	9000011032	Dust Ring	2	
4	9000011033	ST-seal	2	
5	9000011034	Shaft Seal	2	
6	9000011035	Cylinder Cover	2	
7	9000011036	Check Ring	2	
8	0090000666	O-Ring	2	
9	9000011037	Bearing	2	
10	9000011038	Piston Rod Assembly	2	
11	9000011039	Hole Sealing	4	
12	9000011040	Check Ring	4	
13	9000011041	Bearing Ring	2	
14	9000006928	Bush	2	
15	9000011042	Cylinder Block	2	
16	9000007016	Tilting Cylinder Pin Shaft After	2	
17	0000025041	Spring Washer	2	
18	0000023263	Bolt	2	
19	0090000665	Knuckle Bearing	2	
20	0000026010	Circlip For Hole	2	
21	0000023407	Bolt	2	
22	0000025055	Spring Washer	2	
23	0000024036	Nut	2	
24	9000007013	Tilting Cylinder Pin Shaft Before	2	

Overhead Guard

FE4D40-50

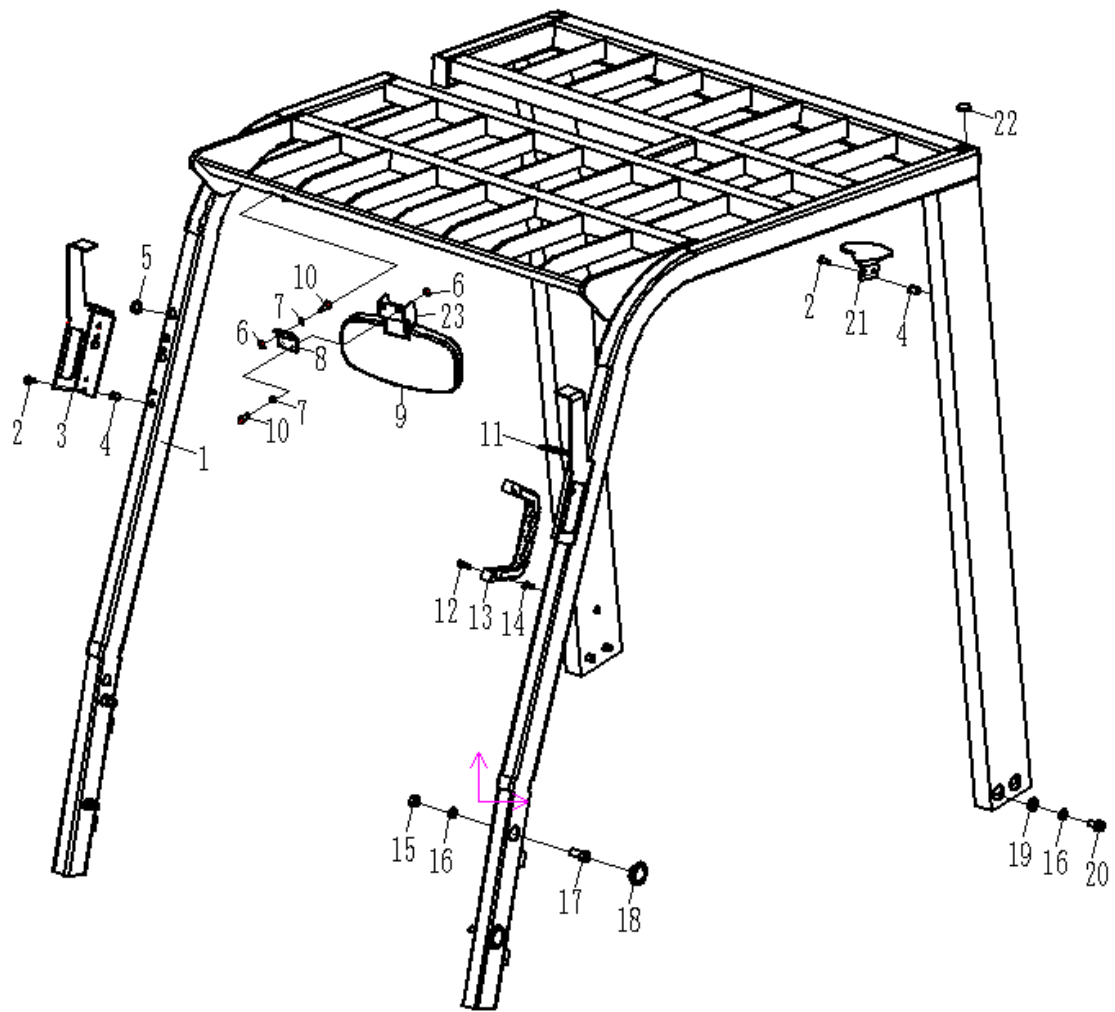


Figure 35

Figure 35

Overhead Guard

No.	SN	Name	QTY	Remarks
1	9000007143	Overhead Guard	1	
2	0090000448	Screw	6	
3	9000010987	Right headlight bracket	1	
4	0090000596	Nut	6	
5	3610119002	Rubber Blanket	3	
6	0000024026	Nut	4	
7	0000025046	Spring Washer	4	
8	9000007164	Transition Support	1	
9	3055137001	Rear view Mirror	1	
10	0000023231	Bolt	4	
11	9000010988	Left headlight bracket	1	
12	0000023143	Bolt	2	
13	3005119001	Handrail	1	
14	0090000597	Nut	2	
15	0000024038	Nut	4	
16	0000025042	Spring Washer	4	
17	0000023268	Bolt	4	
18	3045118001	Rubber-cover	4	
19	0000025048	Washer	4	
20	0000023340	Bolt	4	
21	9000011043	Warning lamp bracket	1	
22	3015118001	Rubber cover	2	
23	3055101003	Rear view bracket	1	

Labels

FE4D40-50

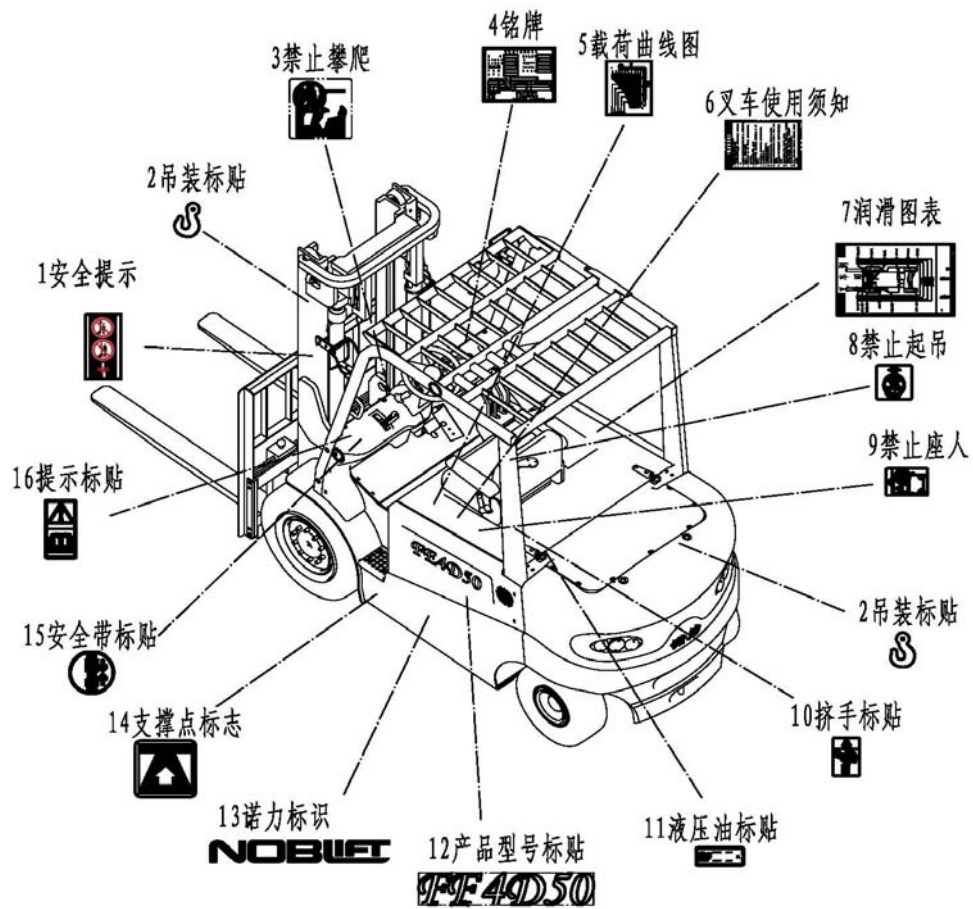


Figure 36

Figure 36

Labels

No.	SN	Name	QTY	Remarks
1	9000003923	Safety Signs	2	
2	9000003918	Lifting Labeling	4	
3	9000003922	No Climbing	1	
4	9000007188	Nameplate	1	
5	9000007193	Load Diagram	1	
6	3009137029	Forklift Use Guidelines	1	
7	9000007191	Lubrication	1	
8	9000003919	Ban Lifting	2	
9	9000003917	Prohibit Person	1	
10	9000004115	Hand Injury	2	
11	9000007189	Hydraulic Oil Labeling	1	
12	9000007190	The Product Model Labeling	2	
13	3009137011	Sign	2	
14	9000003920	Strong Point	4	
15	9000003921	Seat Belt	1	
16	9000003916	Prompt Labeling	1	

NOBLIFT 诺力

NOBLIFT

ZheJiang Noblelift Equipment Joint Stock Co.,Ltd

Tel: 86-572-6210776 6210788

Fax: 86-572-6210777 6128612

PC: 313100

Email: info@noblelift.com

URL: www.noblelift.com www.noblelift.cn

Add: 528 Changzhou Road, Taihu Sub-district, Changxing, Zhejiang 313100 China